



Price
£270,000

Freehold

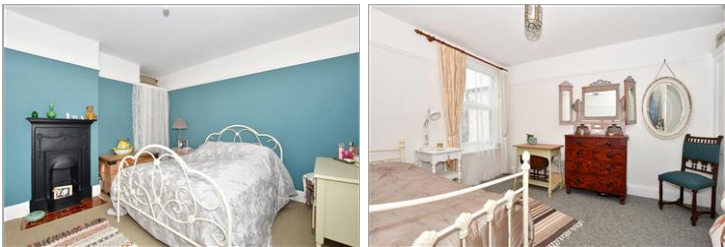
2x  1x  2x 

**Pleasant Road,
Southsea, Hampshire,
PO4**

OVER 60?

Secure this property
for up to **59% less!**

cubitt&west
Helping you move forwards



Main features

- A very well presented property in a requested location
- Modern open plan kitchen/dining area
- Sunny aspect rear garden
- Close to all local amenities
- Excellent transport links in and out of the area

Accommodation

GROUND FLOOR

Entrance Hallway

Lounge: 10'5 x 10'3 (3.18m x 3.13m)

Dining Area: 13'1 x 13'1 (3.99m x 3.99m)

Kitchen: 14'1 x 9'2 (4.30m x 2.80m)

FIRST FLOOR

Landing

Bedroom 1: 13'1 x 11'4 (3.99m x 3.46m)

Bedroom 2: 12'1 x 9'8 (3.69m x 2.95m)

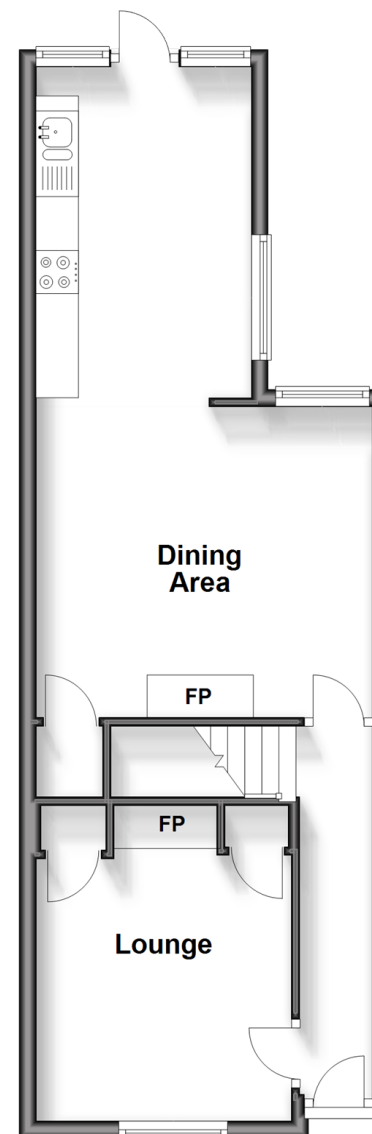
Bathroom

OUTSIDE

Rear Garden

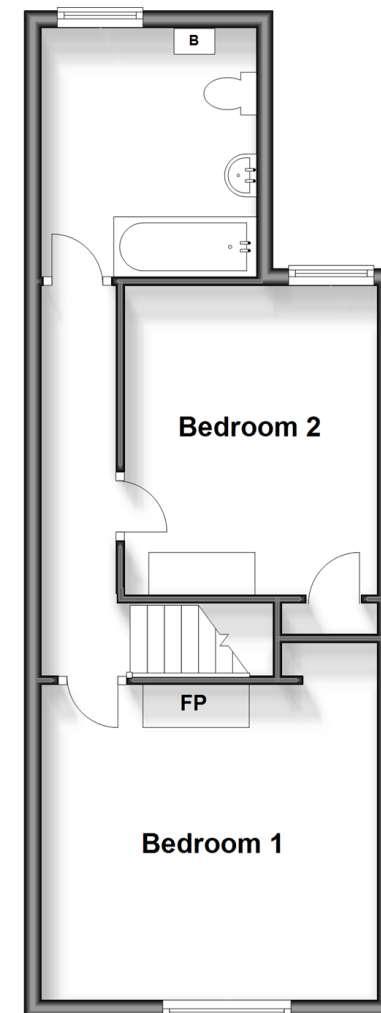
Ground Floor

Approx. 42.8 sq. metres (461.1 sq. feet)



First Floor

Approx. 40.7 sq. metres (438.2 sq. feet)



Call Southsea - 023 9229 6396 ■ cubittandwest.co.uk

- Legal advice should be taken to verify fixtures/fittings, planning, alterations and/or lease details
- Appliances & services are untested, dimensions are approximate and floor plans are not to scale
- Through a Homewise Home For Life Plan people aged 60+ can secure this property for up to 59% less, by purchasing a Lifetime Lease.

