



Price
£325,000

Freehold

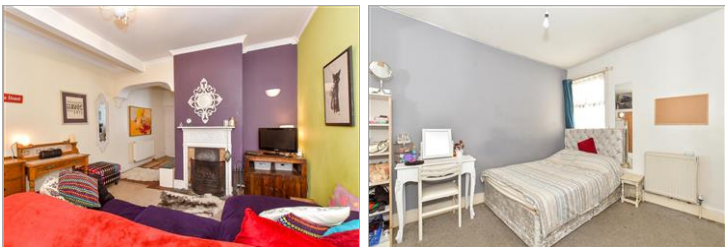
3x  2x  2x 

**Northcote Road,
Southsea, Hampshire,
PO4**

OVER 60?

Secure this property
for up to **59% less!**

cubitt&west
Helping you move forwards



Main features

- Lovely original character features
- Spacious and bright rooms throughout
- Versatile ground floor accommodation
- Beautiful mature sunny rear garden
- Central Southsea location

Accommodation

GROUND FLOOR

Entrance Hallway

Lounge: 12'5 x 8'10 (3.79m x 2.69m)

Dining Area: 14'0 x 8'10 (4.27m x 2.69m)

Inner Hallway

Kitchen/Breakfast Room: 23'5 x 8'10 (7.14m x 2.69m)

Cloakroom

FIRST FLOOR

Landing

Bedroom 1: 13'1 x 12'11 (3.99m x 3.94m)

Bedroom 2: 13'1 x 9'10 (3.99m x 3.00m)

Bedroom 3: 8'10 x 5'8 (2.69m x 1.73m)

Bathroom

OUTSIDE

Rear Garden

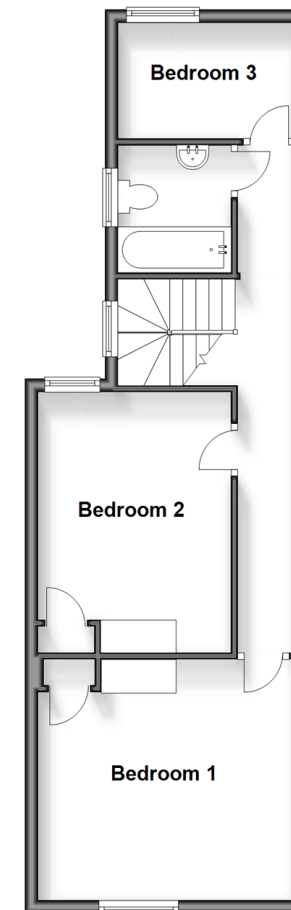
Ground Floor

Approx. 62.1 sq. metres (668.0 sq. feet)



First Floor

Approx. 46.6 sq. metres (501.5 sq. feet)



Call Southsea - 023 9229 6396 ■ cubittandwest.co.uk

- Legal advice should be taken to verify fixtures/fittings, planning, alterations and/or lease details
- Appliances & services are untested, dimensions are approximate and floor plans are not to scale
- Through a Homewise Home For Life Plan people aged 60+ can secure this property for up to 59% less, by purchasing a Lifetime Lease.



42227233/20240702/JT/SA