



**OVER 60?**

Secure this property  
for up to **59% less!**

**Price**  
**£250,000**

**Freehold**

2x  1x  2x 

**Priory Road, Eastney,  
Southsea, Hampshire,  
PO4**

**cubitt&west**  
Helping you move forwards





## Main features

- **OPEN HOUSE Saturday 6th July 12pm - 2pm**
- **Well presented extended bright home**
- **Sunny aspect rear garden**
- **Additional loft room**
- **Neutral modern decor throughout**
- **Great location with local amenities and the beach close by**

## Accommodation

### GROUND FLOOR

Entrance Hallway

Lounge: 12'0 x 10'3 (3.66m x 3.13m)

Dining Room: 11'11 x 10'4 (3.63m x 3.15m)

Kitchen: 13'3 x 6'11 (4.04m x 2.11m)

Utility Area: 9'3 x 6'2 (2.82m x 1.88m)

Bathroom

### FIRST FLOOR

Landing

Bedroom 1: 12'0 x 10'5 (3.66m x 3.18m)

Bedroom 2: 11'11 x 10'5 (3.63m x 3.18m)

### SECOND FLOOR

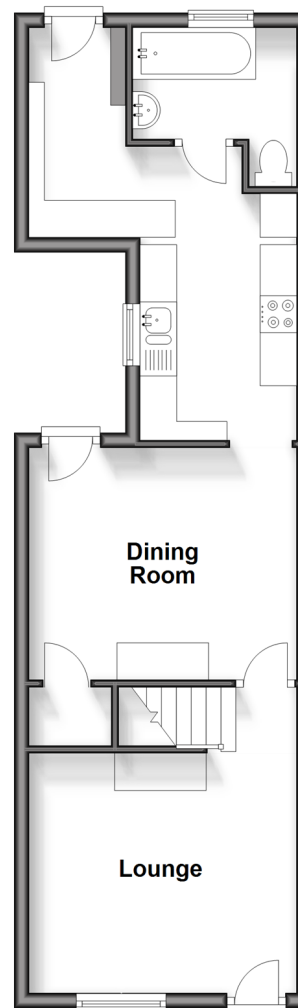
Loft Room: 12'1 x 11'2 (3.69m x 3.41m)

### OUTSIDE

Rear Garden

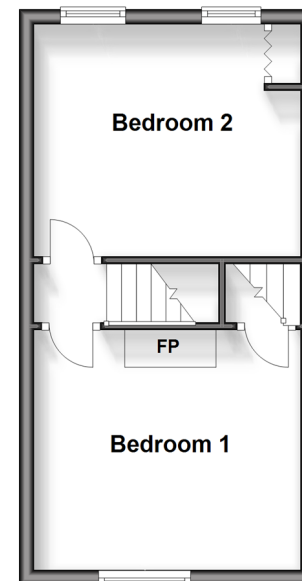
### Ground Floor

Approx. 43.5 sq. metres (467.8 sq. feet)



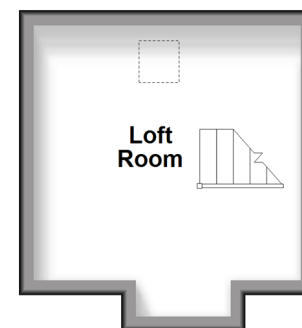
### First Floor

Approx. 27.0 sq. metres (290.6 sq. feet)



### Second Floor

Approx. 13.2 sq. metres (142.5 sq. feet)



**Call Southsea - 023 9229 6396 ■ [cubittandwest.co.uk](http://cubittandwest.co.uk)**

- Legal advice should be taken to verify fixtures/fittings, planning, alterations and/or lease details
- Appliances & services are untested, dimensions are approximate and floor plans are not to scale
- Through a Homewise Home For Life Plan people aged 60+ can secure this property for up to 59% less, by purchasing a Lifetime Lease.



42216656/20240702/JT/SA