



Price
£625,000

Freehold

7x  2x  2x 

**Salisbury Road,
Southsea, Hampshire,
PO4**

OVER 60?

Secure this property
for up to **59% less!**

cubitt&west
Helping you move forwards

Accommodation

BASEMENT

Entrance Hallway

Lounge: 19'0 x 14'1 (5.80m x 4.30m)

Dining Room: 17'0 x 11'9 (5.19m x 3.58m)

Kitchen: 9'10 x 9'10 (3.00m x 3.00m)

Cloakroom

Bathroom

SPLIT LEVEL GROUND FLOOR

Landing

Sitting Area: 19'0 x 14'1 (5.80m x 4.30m)

Family Area: 17'0 x 11'9 (5.19m x 3.58m)

Cloakroom

SPLIT LEVEL FIRST FLOOR

Landing

Bedroom 1: 17'7 x 11'8 (5.36m x 3.56m)

Bathroom

Bedroom 2: 12'2 x 11'6 (3.71m x 3.51m)

Cloakroom

Bedroom 3: 14'1 x 6'7 (4.30m x 2.01m)

SECOND FLOOR

Landing

Bedroom 4: 12'2 x 9'10 (3.71m x 3.00m)

Bedroom 5: 13'9 x 7'10 (4.19m x 2.39m)

Bedroom 6: 10'2 x 9'10 (3.10m x 3.00m)

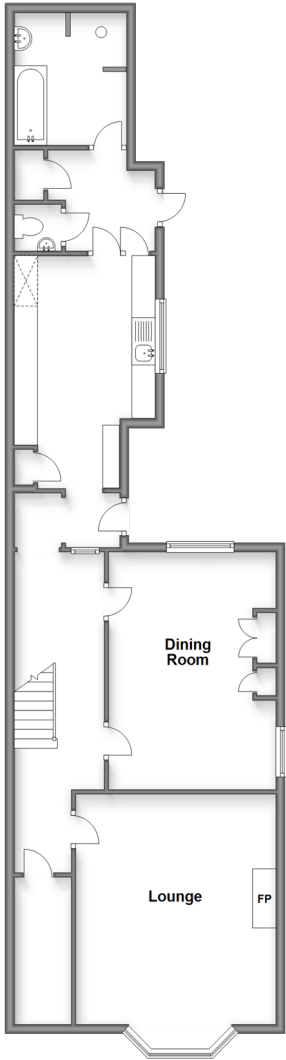
Bedroom 7: 10'10 x 9'10 (3.30m x 3.00m)

OUTSIDE

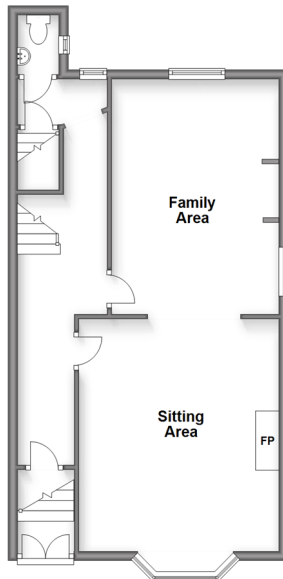
Off Road Parking

Rear Garden

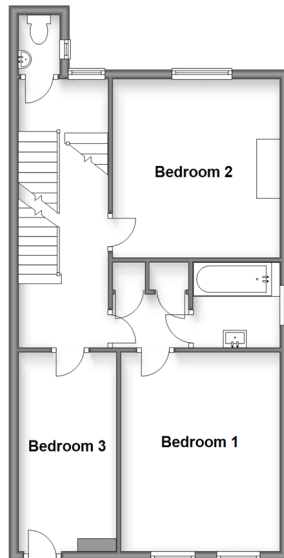
Basement
Approx. 86.6 sq. metres (932.2 sq. feet)



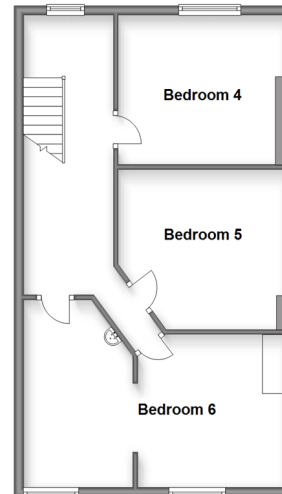
Split Level Ground Floor
Approx. 57.5 sq. metres (619.1 sq. feet)



Split Level First Floor
Approx. 57.2 sq. metres (616.2 sq. feet)



Second Floor
Approx. 56.0 sq. metres (603.2 sq. feet)





Main features

- Great sized family residence in popular location
- Minutes from Canoe lake, seafront and beach
- All daily amenities close by
- Excellent school and college catchment area
- Good access and transport links in and out of the area



Nearest Schools

Primary Schools: Craneswater Junior School 0.2 miles, St Swithun's Catholic Primary 0.5 miles, Fernhurst Junior School 0.6 miles
Secondary Schools: Mayville High School 0.5 miles



Transport Information

Train Stations: Fratton 0.9 miles, Portsmouth & Southsea 1.4 miles, Portsmouth Harbour 1.9 miles



Address

Salisbury Road, Southsea, Hampshire, PO4



Directions

For directions to this property please contact us.



cubitt&west
Helping you move forwards

Call Southsea Branch 023 9229 6396 ■ cubittandwest.co.uk



■ Legal advice should be taken to verify fixtures/fittings, planning, alterations and/or lease details ■ Appliances & services are untested, dimensions are approximate and floor plans are not to scale
■ Through a Homewise Home For Life Plan people aged 60+ can secure this property for up to 59% less, by purchasing a Lifetime Lease.



42226916/20240208/MO1/AML