



Price
£175,000

Leasehold

3x 🏠 1x 🚶 1x 🚗

**King Street, Southsea,
Hampshire, PO5**

OVER 60?

Secure this property
for up to **59% less!**

cubitt & west
Helping you move forwards



Main features

- Spacious purpose built split level apartment
- Secure intercom access
- Open plan living space on the lower floor
- Well managed by Portsmouth city council
- Central location, close to shops, schools and the seafront

Accommodation

SECOND FLOOR

Entrance Hallway
 Lounge: 18'4 x 16'6 (5.59m x 5.03m)
 Kitchen: 12'5 x 10'8 (3.79m x 3.25m)

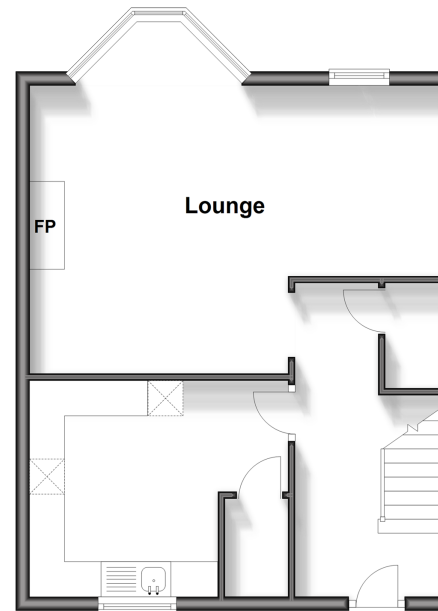
THIRD FLOOR

Landing
 Bedroom 1: 12'5 x 10'5 (3.79m x 3.18m)
 Bedroom 2: 11'5 x 10'3 (3.48m x 3.13m)
 Bedroom 3: 8'11 x 8'9 (2.72m x 2.67m)
 Bathroom
 Separate Toilet

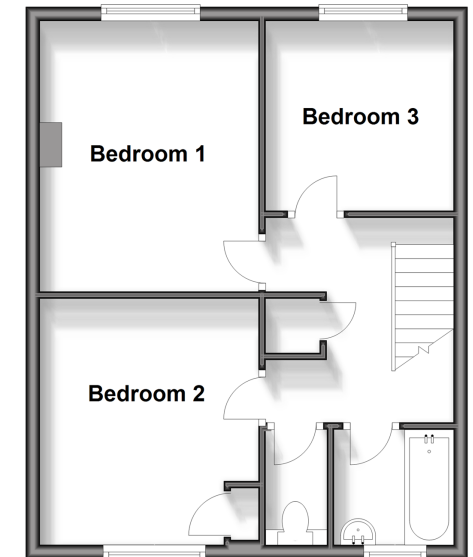
OUTSIDE

Communal Area's

Second Floor
 Approx. 43.3 sq. metres (466.4 sq. feet)



Third Floor
 Approx. 44.1 sq. metres (474.9 sq. feet)



Call Southsea - 023 9229 6396 ■ cubittandwest.co.uk

■ Legal advice should be taken to verify fixtures/fittings, planning, alterations and/or lease details
 ■ Through a Homewise Home For Life Plan people aged 60+ can secure this property for up to 59% less, by purchasing a Lifetime Lease.

■ Appliances & services are untested, dimensions are approximate and floor plans are not to scale



42227085/20240130/MO1/MH