



Price
£400,000

Freehold

3x  2x  1x 

**Terence Gardens, St.
Ronan's Road, Southsea,
Hampshire, PO4**

OVER 60?

Secure this property
for up to **59% less!**

cubitt&west
Helping you move forwards



Main features

- Situated in a quiet gated development
- Good sized accommodation throughout
- Minutes from the seafront & beach
- Close to all daily amenities.
- Excellent school and college catchment area.

Accommodation

GROUND FLOOR

Entrance Hallway
Cloakroom
Kitchen/Diner: 13'7 x 8'9 (4.14m x 2.67m)
Utility Room: 8'7 x 5'3 (2.62m x 1.60m)

FIRST FLOOR

Landing
Lounge: 13'8 x 12'11 (4.17m x 3.94m)
Bedroom 2: 13'7 x 8'9 (4.14m x 2.67m)
Bathroom

SECOND FLOOR

Landing
Bedroom 1: 13'7 x 13'0 (4.14m x 3.97m)
En-Suite Shower Room
Bedroom 3: 13'1 x 8'9 (3.99m x 2.67m)

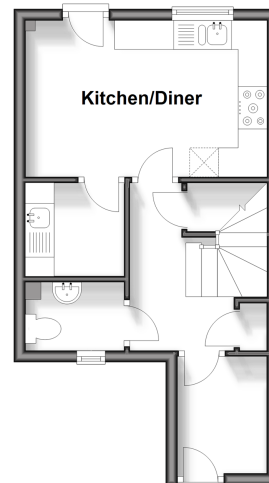
THIRD FLOOR

Loft Area

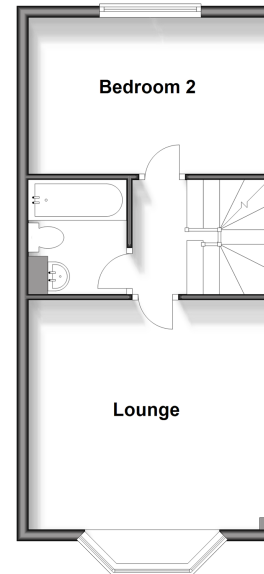
OUTSIDE

Integral Car Port
Rear Garden

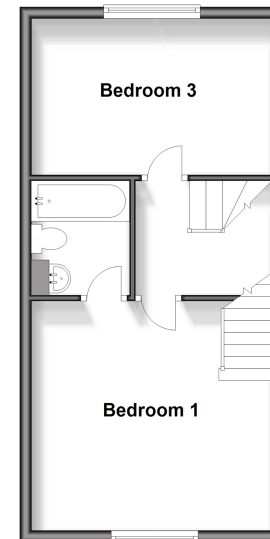
Ground Floor
Approx. 27.1 sq. metres (291.4 sq. feet)



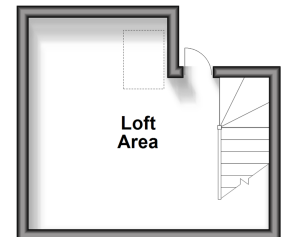
First Floor
Approx. 37.3 sq. metres (401.1 sq. feet)



Second Floor
Approx. 36.9 sq. metres (397.2 sq. feet)



Third Floor
Approx. 13.4 sq. metres (144.7 sq. feet)



Call Southsea - 023 9229 6396 ■ cubittandwest.co.uk

■ Legal advice should be taken to verify fixtures/fittings, planning, alterations and/or lease details
■ Through a Homewise Home For Life Plan people aged 60+ can secure this property for up to 59% less, by purchasing a Lifetime Lease.

■ Appliances & services are untested, dimensions are approximate and floor plans are not to scale