



Guide Price
£220,000

Freehold

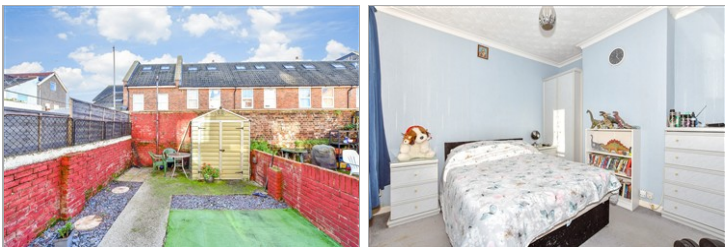
3x  1x  2x 

**New Road East,
Portsmouth, Hampshire,
PO2**

OVER 60?

Secure this property
for up to **59% less!**

cubitt&west
Helping you move forwards



Main features

- Ideal for first time buyers
- No forward chain
- Flexible living space throughout
- Convenient downstairs bathroom
- Close to shops, transport links and local amenities

Accommodation

GROUND FLOOR

Entrance Hallway

Lounge: 13'4 x 11'6 (4.07m x 3.51m)

Dining Room: 13'3 x 10'6 (4.04m x 3.20m)

Kitchen: 10'1 x 8'9 (3.08m x 2.67m)

Bathroom

Separate Toilet

FIRST FLOOR

Landing

Bedroom 1: 13'5 x 11'7 (4.09m x 3.53m)

Bedroom 2: 10'4 x 9'5 (3.15m x 2.87m)

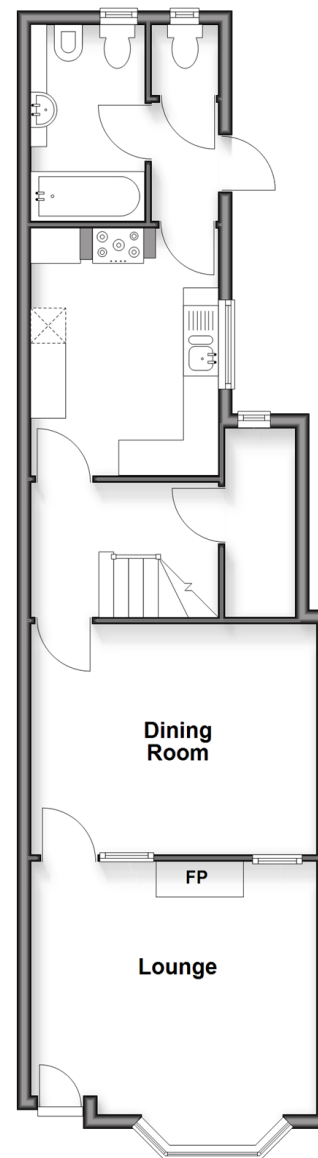
Bedroom 3: 10'6 x 9'0 (3.20m x 2.75m)

OUTSIDE

Rear Garden

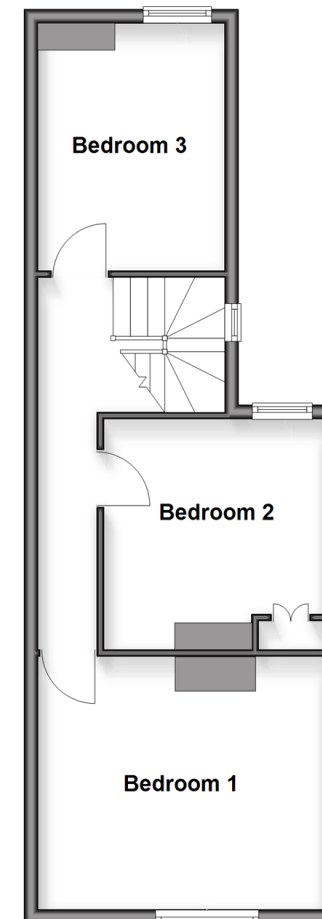
Ground Floor

Approx. 54.3 sq. metres (584.7 sq. feet)



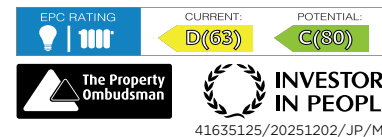
First Floor

Approx. 43.5 sq. metres (468.3 sq. feet)



Call Portsmouth - 023 9266 1213 ■ cubittandwest.co.uk

- A private rental licensing scheme applies to some properties in this area, please check with the Local Authority before proceeding
- Legal advice should be taken to verify fixtures/fittings, planning, alterations and/or lease details
- Appliances & services are untested, dimensions are approximate and floor plans are not to scale
- Through a Homewise Home For Life Plan people aged 60+ can secure this property for up to 50% less, by purchasing a Lifetime Lease



41635125/20251202/JP/MN