



Guide Price
£160,000

Leasehold

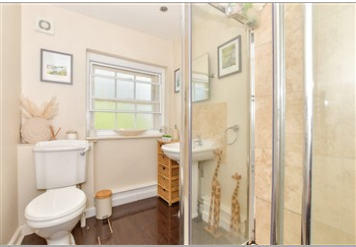
2x  1x  1x 

**Little Park Mansions,
Titchfield Lane,
Wickham, Fareham,
PO17**

OVER 60?

Secure this property
for up to **59% less!**

cubitt&west
Helping you move forwards



Main features

- Grade II listed building
- Spacious second floor apartment
- Stunning views - overlooking open fields for a peaceful setting
- Ample parking - plenty of space for residents and visitors
- Long Lease - 146 Years remaining - affordable ground rent and maintenance fees.

Accommodation

SECOND FLOOR

Entrance Hallway

Lounge: 16'7 x 14'11 (5.06m x 4.55m)

Kitchen: 9'6 x 7'5 (2.90m x 2.26m)

Bedroom 1: 12'7 x 11'5 (3.84m x 3.48m)

Bedroom 2: 12'11 x 8'11 (3.94m x 2.72m)

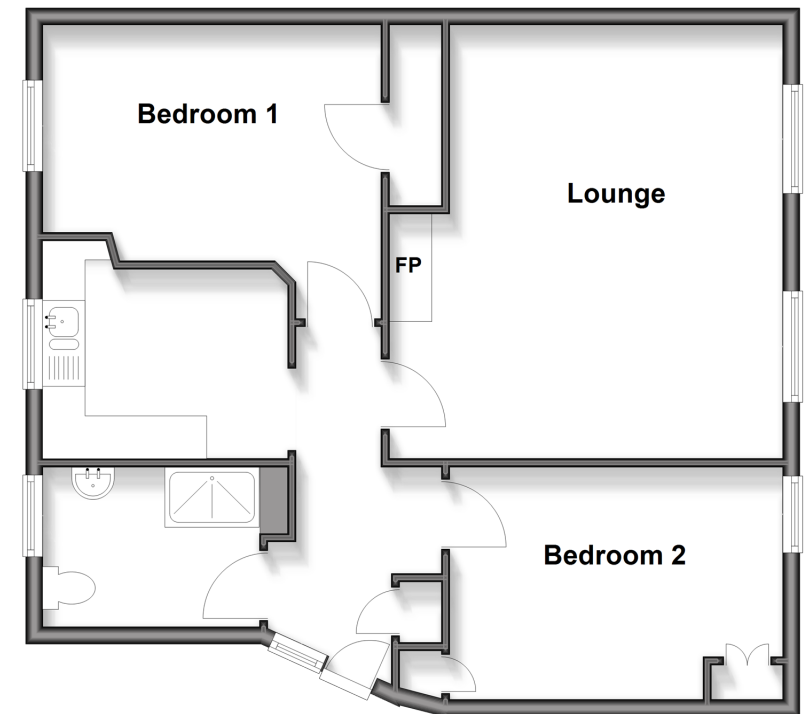
Shower Room

OUTSIDE

Allocated Parking

Second Floor

Approx. 65.7 sq. metres (706.7 sq. feet)



Call Portsmouth - 023 9266 1213 ■ cubittandwest.co.uk

- A private rental licensing scheme applies to some properties in this area, please contact us before proceeding
- Legal advice should be taken to verify fixtures/fittings, planning, alterations and/or lease details
- Appliances & services are untested, dimensions are approximate and floor plans are not to scale
- Through a Homewise Home For Life Plan people aged 60+ can secure this property for up to 50% less, by purchasing a Lifetime Lease.

