



**OVER 60?**

Secure this property  
for up to **59% less!**

**Price**

**£180,000**

**Freehold**

3x  2x  3x 

**Sandringham Road,  
Portsmouth, Hampshire,  
PO1**

**cubitt&west**  
Helping you move forwards





## Main features

- **Victorian terrace split into 2 flats with tenants in situ**
- **Ideal purchase for investors to add to their portfolio**
- **Good school catchment area**
- **Close to your local daily amenities**
- **Good road links in and out of the area**

## Accommodation

### GROUND FLOOR

Entrance Hallway  
 Bedroom: 11'8 x 11'4 (3.56m x 3.46m)  
 Lounge: 14'4 x 9'2 (4.37m x 2.80m)  
 Dining Room/Bedroom 2: 12'9 x 8'4 (3.89m x 2.54m)  
 Kitchen: 8'7 x 7'8 (2.62m x 2.34m)  
 Bathroom  
 Cloakroom

### FIRST FLOOR

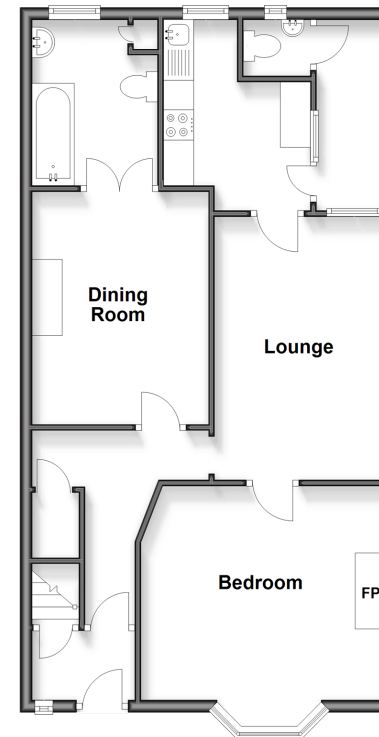
Landing  
 Lounge: 11'8 x 11'4 (3.56m x 3.46m)  
 Bedroom: 14'3 x 8'2 (4.35m x 2.49m)  
 Kitchen: 12'7 x 8'4 (3.84m x 2.54m)  
 Bathroom: 7'5 x 5'7 (2.26m x 1.70m)

### OUTSIDE

Front Forecourt  
 Rear Garden

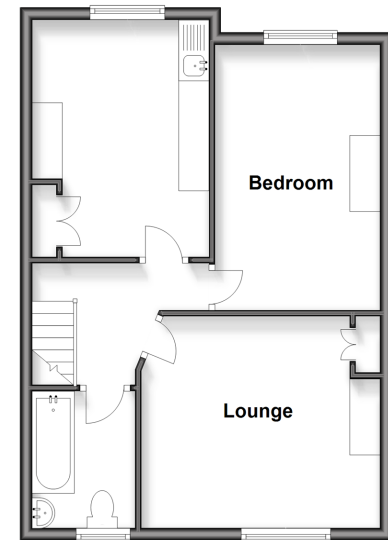
### Ground Floor

Approx. 65.8 sq. metres (708.5 sq. feet)



### First Floor

Approx. 47.0 sq. metres (506.1 sq. feet)



**Call Portsmouth - 023 9266 1213 ■ [cubittandwest.co.uk](http://cubittandwest.co.uk)**

- Legal advice should be taken to verify fixtures/fittings, planning, alterations and/or lease details
- Appliances & services are untested, dimensions are approximate and floor plans are not to scale
- Through a Homewise Home For Life Plan people aged 60+ can secure this property for up to 59% less, by purchasing a Lifetime Lease.



41634809/20250416/MO1/JV