



Price
£360,000

Freehold

3x  1x  2x 

**Highbury Grove,
Portsmouth, Hampshire,
PO6**

cubitt&west
Helping you move forwards



Main features

- Well presented throughout
- Home office in the Garden
- Driveway parking for 2/3 Vehicles
- Sought-after location close to local daily amenities
- Easy access to transport links and schools

Accommodation

GROUND FLOOR

Entrance Hallway
Lounge: 17'9 x 11'2 (5.41m x 3.41m)
Dining Area: 11'7 x 10'5 (3.53m x 3.18m)
Kitchen: 15'2 x 6'5 (4.63m x 1.96m)
Cloakroom/Utility Room

FIRST FLOOR

Landing
Bedroom 1: 17'6 x 11'3 (5.34m x 3.43m)
Bedroom 2: 11'8 x 8'7 (3.56m x 2.62m)
Bedroom 3: 11'7 x 8'5 (3.53m x 2.57m)
Bathroom: 5'7 x 5'7 (1.70m x 1.70m)

OUTSIDE

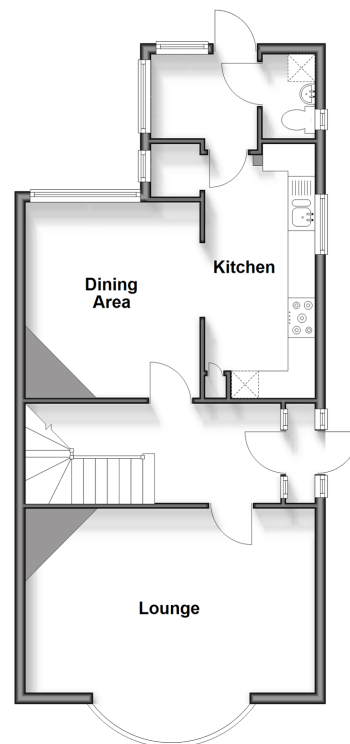
Off Road Parking
Rear Garden

OUTBUILDING

Garage

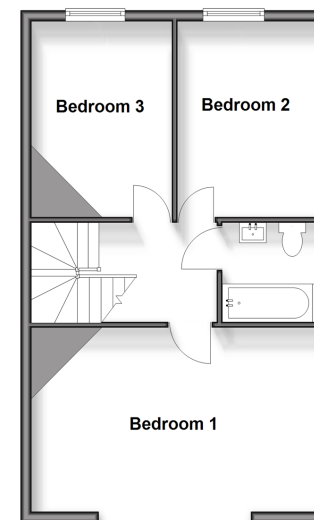
Ground Floor

Approx. 57.3 sq. metres (617.3 sq. feet)



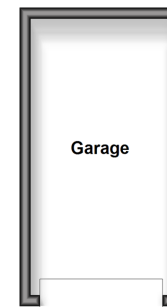
First Floor

Approx. 49.0 sq. metres (527.8 sq. feet)



Outbuilding

Approx. 13.1 sq. metres (140.5 sq. feet)



Call Portsmouth - 023 9266 1213 ■ cubittandwest.co.uk

■ Legal advice should be taken to verify fixtures/fittings, planning, alterations and/or lease details

■ Appliances & services are untested, dimensions are approximate and floor plans are not to scale



41634803/20250519/CH1/JV