



Guide Price
£269,500

Freehold

3x  1x  2x 

**San Diego Road,
Gosport, Hampshire,
PO12**

OVER 60?

Secure this property
for up to **59% less!**

cubitt&west
Helping you move forwards



Main features

- Corner house with spacious rooms
- Gated garden with drive for 3-4 vehicles and separate garage
- Within walking distance to the local schools
- Situated close to shops, pubs and on the bus routes
- A must view property

Accommodation

GROUND FLOOR

Entrance Hallway

Lounge: 22'1 x 15'1 (6.74m x 4.60m)

Dining Room: 15'3 x 8'7 (4.65m x 2.62m)

Kitchen: 12'5 x 8'1 (3.79m x 2.47m)

Utility Area: 5'7 x 3'5 (1.70m x 1.04m)

FIRST FLOOR

Landing

Bedroom 1: 16'9 x 14'9 (5.11m x 4.50m)

Bedroom 2: 14'1 x 11'7 (4.30m x 3.53m)

Bedroom 3: 12'3 x 8'6 (3.74m x 2.59m)

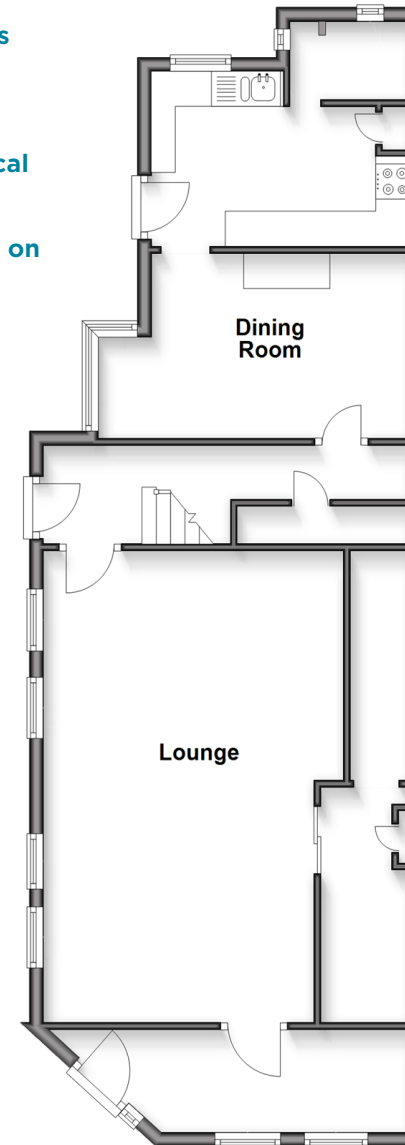
Shower Room

OUTSIDE

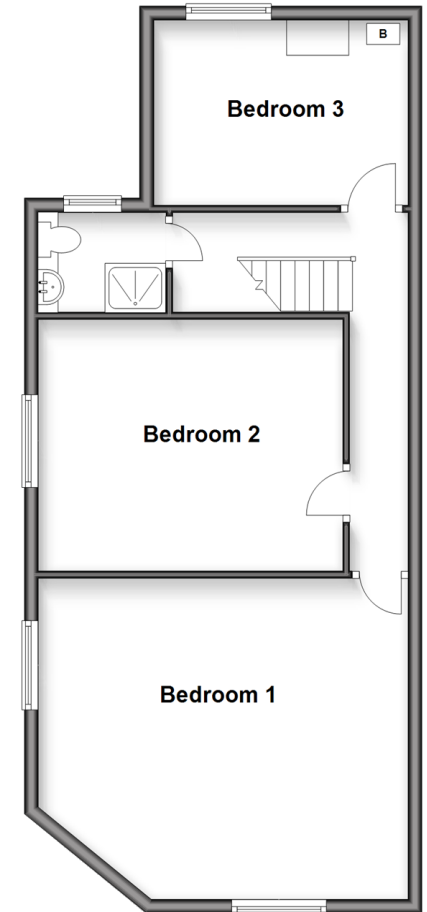
Garage and Off Road Parking

Rear Garden

Ground Floor
Approx. 73.2 sq. metres (787.4 sq. feet)



First Floor
Approx. 61.4 sq. metres (660.6 sq. feet)



Call Portsmouth - 023 9266 1213 ■ cubittandwest.co.uk

- Legal advice should be taken to verify fixtures/fittings, planning, alterations and/or lease details
- Appliances & services are untested, dimensions are approximate and floor plans are not to scale
- Through a Homewise Home For Life Plan people aged 60+ can secure this property for up to 59% less, by purchasing a Lifetime Lease.



41634690/20250409/DJ/MH