



OVER 60?

Secure this property
for up to **59% less!**

Price

£360,000

Freehold

4x  2x  2x 

**Highgrove Road,
Portsmouth, Hampshire,
PO3**

cubitt & west
Helping you move forwards



Main features

- Beautifully presented family home
- Flexible accommodation split over 3 floors
- Versatile outbuilding, with electric and data points
- Expertly converted loft room with Juliet balcony
- Private rear garden with side access

Accommodation

GROUND FLOOR

Entrance Hallway
 Lounge: 14'9 x 14'1 (4.50m x 4.30m)
 Dining Area: 11'10 x 10'11 (3.61m x 3.33m)
 Conservatory: 17'0 x 8'6 (5.19m x 2.59m)
 Separate Toilet
 Kitchen: 9'2 x 8'7 (2.80m x 2.62m)

FIRST FLOOR

Landing
 Bedroom 2: 14'3 x 14'0 (4.35m x 4.27m)
 Bedroom 3: 11'11 x 11'4 (3.63m x 3.46m)
 Bedroom 4: 9'3 x 8'8 (2.82m x 2.64m)
 Bathroom: 5'8 x 5'7 (1.73m x 1.70m)

SECOND FLOOR

Second Floor Landing
 Bedroom 1: 14'7 x 9'0 (4.45m x 2.75m)
 Shower Room
 Study: 7'3 x 5'9 (2.21m x 1.75m)

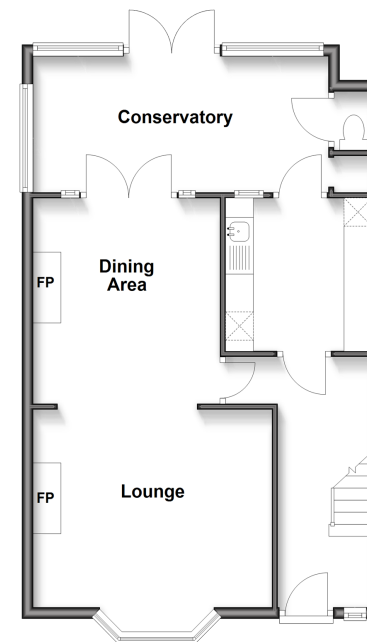
OUTSIDE

Front Forecourt
 Rear Garden

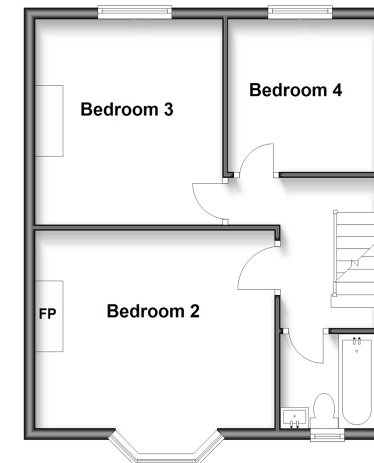
OUTBUILDING

Outbuilding Room : 10'5 x 8'5 (3.18m x 2.57m)

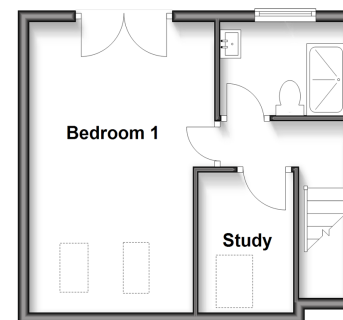
Ground Floor
 Approx. 58.8 sq. metres (633.3 sq. feet)



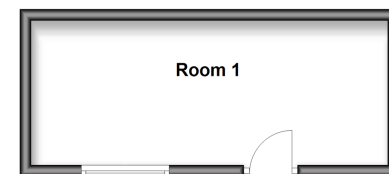
First Floor
 Approx. 44.1 sq. metres (474.4 sq. feet)



Second Floor
 Approx. 28.8 sq. metres (309.7 sq. feet)



Outbuilding
 Approx. 16.3 sq. metres (175.6 sq. feet)



Call Portsmouth - 023 9266 1213 ■ cubittandwest.co.uk

- Legal advice should be taken to verify fixtures/fittings, planning, alterations and/or lease details
- Appliances & services are untested, dimensions are approximate and floor plans are not to scale
- Through a Homewise Home For Life Plan people aged 60+ can secure this property for up to 59% less, by purchasing a Lifetime Lease.



42227362/20250516/JV/MH