



OVER 60?

Secure this property
for up to **59% less!**

Price
£300,000

Freehold

3x  1x  2x 

**Chesterfield Road,
Portsmouth, Hampshire,
PO3**

cubitt&west
Helping you move forwards



Main features

- Beautifully renovated home in popular Baffin's
- Modern open plan kitchen
- Separate living spaces on the ground floor
- Private rear garden
- Ideal purchase for a young family

Accommodation

GROUND FLOOR

Entrance Hallway

Lounge: 11'10 x 10'7 (3.61m x 3.23m)

Dining Area: 13'6 x 8'7 (4.12m x 2.62m)

Kitchen Area: 12'9 x 7'0 (3.89m x 2.14m)

Conservatory: 12'8 x 7'1 (3.86m x 2.16m)

Cloakroom

FIRST FLOOR

Landing

Bedroom 1: 13'7 x 8'8 (4.14m x 2.64m)

Bedroom 2: 12'8 x 7'0 (3.86m x 2.14m)

Bedroom 3: 11'11 x 10'7 (3.63m x 3.23m)

Bathroom

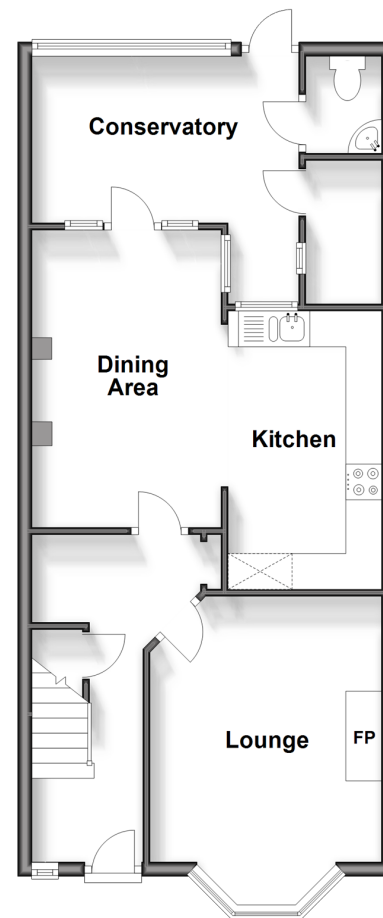
OUTSIDE

Front Forecourt

Rear Garden

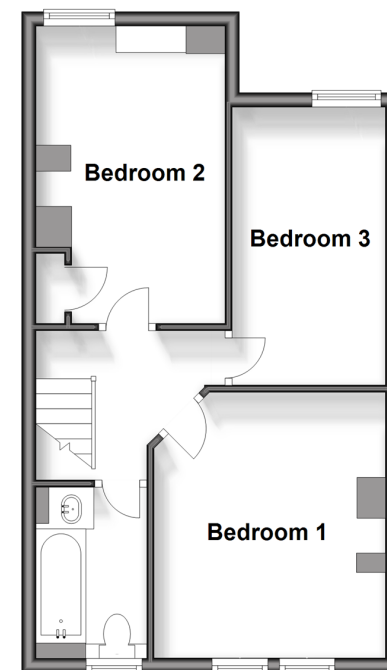
Ground Floor

Approx. 55.4 sq. metres (596.4 sq. feet)



First Floor

Approx. 40.7 sq. metres (438.4 sq. feet)



Call Portsmouth - 023 9266 1213 ■ cubittandwest.co.uk

- Legal advice should be taken to verify fixtures/fittings, planning, alterations and/or lease details
- Appliances & services are untested, dimensions are approximate and floor plans are not to scale
- Through a Homewise Home For Life Plan people aged 60+ can secure this property for up to 59% less, by purchasing a Lifetime Lease.



41634325/20250114/MO1/MH