



OVER 60?

Secure this property
for up to **59% less!**

Price

£330,000

Freehold

3x  1x  2x 

**Grove Road, Cosham,
Portsmouth, Hampshire,
PO6**

cubitt&west
Helping you move forwards



Main features

- Spacious family home in highly sought after area
- Large sunny aspect garden
- Garage at rear of property
- Potential to further develop subject to planning permission
- Flexible accommodation throughout

Accommodation

GROUND FLOOR

Entrance Hallway

Lounge: 15'3 x 12'9 (4.65m x 3.89m)

Dining Room: 13'10 x 10'11 (4.22m x 3.33m)

Kitchen: 10'3 x 7'3 (3.13m x 2.21m)

Conservatory: 19'0 x 7'6 (5.80m x 2.29m)

Cloakroom

FIRST FLOOR

Bedroom 1: 16'0 x 11'7 (4.88m x 3.53m)

Bedroom 2: 13'0 x 11'11 (3.97m x 3.63m)

Bedroom 3: 7'11 x 6'8 (2.41m x 2.03m)

Bathroom

OUTSIDE

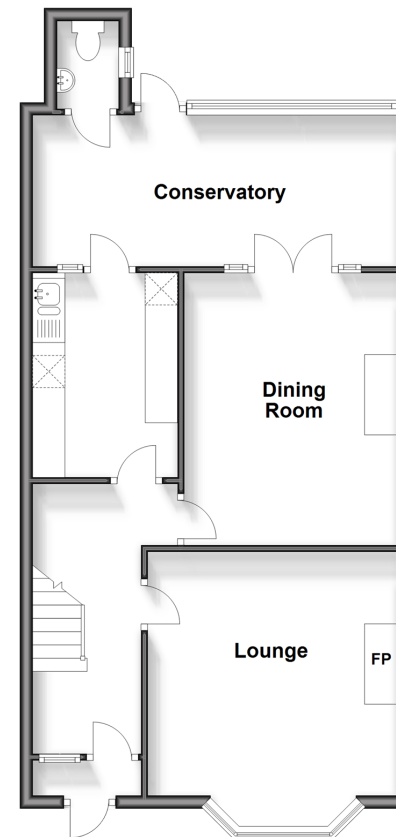
Front Forecourt

Rear Garden

Garage

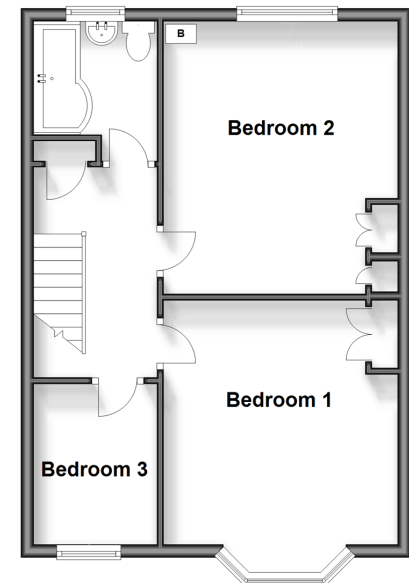
Ground Floor

Approx. 61.6 sq. metres (663.1 sq. feet)



First Floor

Approx. 46.2 sq. metres (497.7 sq. feet)



Call Portsmouth - 023 9266 1213 ■ cubittandwest.co.uk

- Legal advice should be taken to verify fixtures/fittings, planning, alterations and/or lease details
- Appliances & services are untested, dimensions are approximate and floor plans are not to scale
- Through a Homewise Home For Life Plan people aged 60+ can secure this property for up to 59% less, by purchasing a Lifetime Lease.



41634258/20250207/VB/MH