



Price
£250,000

Freehold

3x  1x  2x 

**Powerscourt Road,
North End, Portsmouth,
Hampshire, PO2**

cubitt & west
Helping you move forwards



Main features

- Bay and forecourt home
- Separate living spaces on the ground floor
- Private rear garden
- Perfect for first time buyers
- Offered for sale with no forward chain

Accommodation

GROUND FLOOR

Entrance Hallway
 Lounge: 14'8 into bay x 10'2 (4.47m x 3.10m)
 Dining Area: 11'5 x 9'2 (3.48m x 2.80m)
 Kitchen: 11'5 x 9'2 (3.48m x 2.80m)
 Bathroom
 Cloakroom

FIRST FLOOR

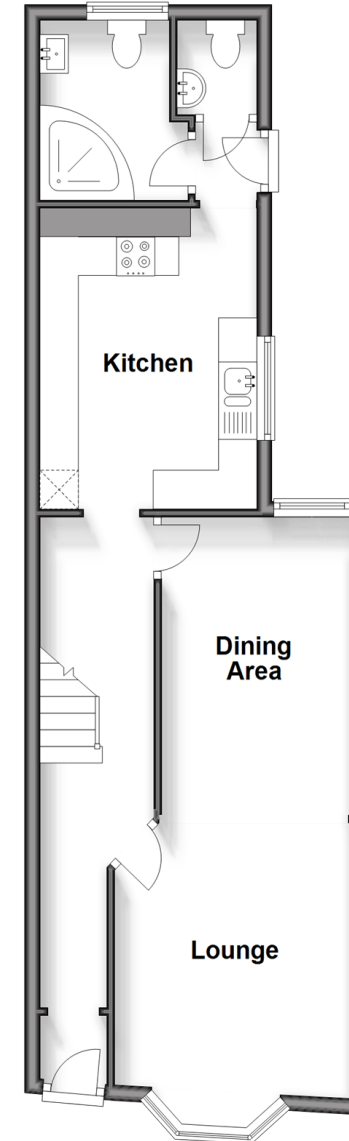
Landing
 Bedroom 1: 13'5 x 11'11 (4.09m x 3.63m)
 Bedroom 2: 11'8 x 9'2 (3.56m x 2.80m)
 Bedroom 3: 11'7 x 8'2 (3.53m x 2.49m)

OUTSIDE

Front Forecourt
 Rear Garden

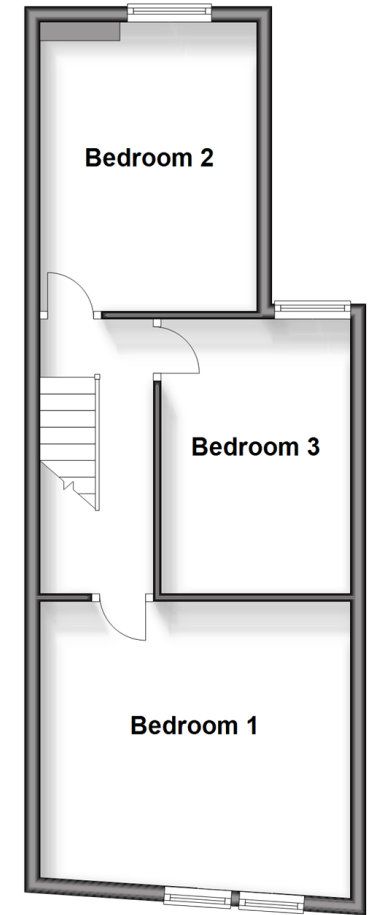
Ground Floor

Approx. 48.3 sq. metres (519.9 sq. feet)



First Floor

Approx. 40.6 sq. metres (437.3 sq. feet)



Call Portsmouth - 023 9266 1213 ■ cubittandwest.co.uk

- Legal advice should be taken to verify fixtures/fittings, planning, alterations and/or lease details
- Appliances & services are untested, dimensions are approximate and floor plans are not to scale



41634567/20241015/MO1/MH