



**Price**

**£287,500**

**Freehold**

3x  1x  1x 

**Corby Crescent,  
Anchorage Park,  
Portsmouth, Hampshire,  
PO3**

**cubitt & west**  
Helping you move forwards



## Main features

- Well presented home in popular location
- Private rear garden with pedestrian side access
- Ample off road parking and garage
- Open plan lounge/diner
- Offered with no forward chain

## Accommodation

### GROUND FLOOR

Entrance Hallway

Lounge/Diner: 17'7 x 11'9 (5.36m x 3.58m)

Kitchen: 12'9 x 5'7 (3.89m x 1.70m)

First floor

Landing

Bedroom 1: 12'7 x 8'3 (3.84m x 2.52m)

Bedroom 2: 11'7 x 8'2 (3.53m x 2.49m)

Bedroom 3: 9'0 x 8'7 (2.75m x 2.62m)

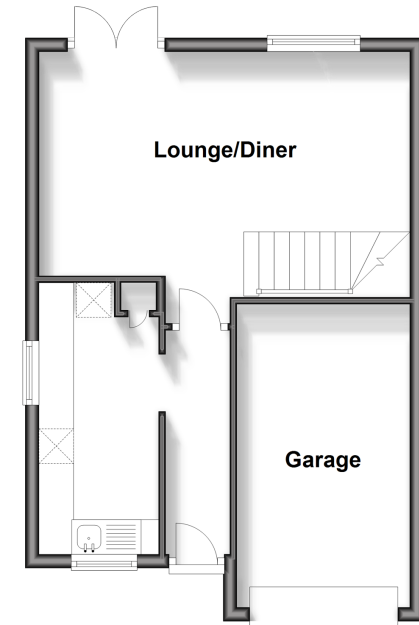
Bathroom: 8'1 x 5'7 (2.47m x 1.70m)

### OUTSIDE

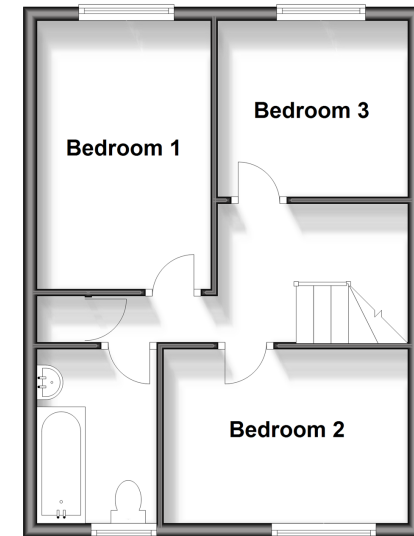
Garage and Off Road Parking

Rear Garden

**Ground Floor**  
Approx. 40.8 sq. metres (439.0 sq. feet)



**First Floor**  
Approx. 38.9 sq. metres (418.3 sq. feet)



**Call Portsmouth - 023 9266 1213 ■ [cubittandwest.co.uk](http://cubittandwest.co.uk)**

- Legal advice should be taken to verify fixtures/fittings, planning, alterations and/or lease details
- Appliances & services are untested, dimensions are approximate and floor plans are not to scale



41634682/20241019/MO1/MH