



Price
£205,000

Freehold

1x  1x  1x 

**Corby Crescent,
Portsmouth, Hampshire,
PO3**

OVER 60?

Secure this property
for up to **59% less!**

cubitt & west
Helping you move forwards



Main features

- End of terrace house situated in Anchorage Park
- Bathroom on first floor
- Sunny aspect garden with rear pedestrian access
- Allocated parking to the rear
- A must see property

Accommodation

GROUND FLOOR

Entrance

Lounge/Kitchen Area: 20'11 x 10'0
(6.38m x 3.05m)

FIRST FLOOR

Landing

Bedroom : 12'3 x 8'9 (3.74m x 2.67m)

Bathroom

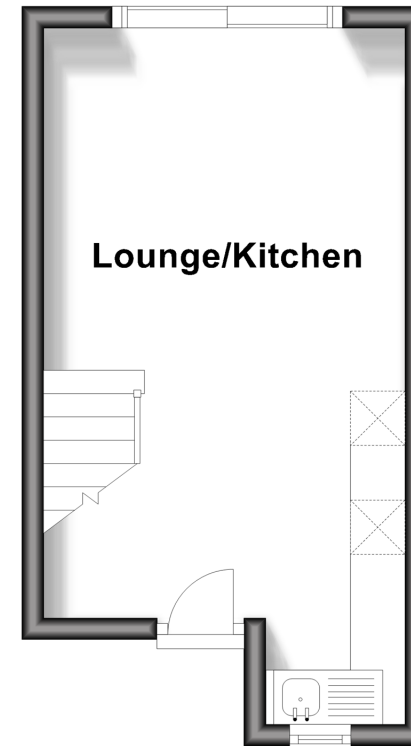
OUTSIDE

Rear Garden

Allocated Parking

Ground Floor

Approx. 19.3 sq. metres (207.7 sq. feet)



First Floor

Approx. 21.3 sq. metres (229.2 sq. feet)



Call Portsmouth - 023 9266 1213 ■ cubittandwest.co.uk

- Legal advice should be taken to verify fixtures/fittings, planning, alterations and/or lease details
- Appliances & services are untested, dimensions are approximate and floor plans are not to scale
- Through a Homewise Home For Life Plan people aged 60+ can secure this property for up to 59% less, by purchasing a Lifetime Lease.



41633386/20241104/ZMG/MH