



OVER 60?

Secure this property
for up to **59% less!**

Price

£300,000

Freehold

3x  1x  1x 

**Sixth Avenue,
Portsmouth, Hampshire,
PO6**

cubitt&west
Helping you move forwards



Ground Floor
Approx. 63.0 sq. metres (678.5 sq. feet)

Main features

- Beautifully presented family home
- Spacious open plan kitchen/dining area
- Separate utility area
- Great transport links, with amenities nearby
- Impressive outside cabin, suitable for a number of uses

Accommodation

GROUND FLOOR

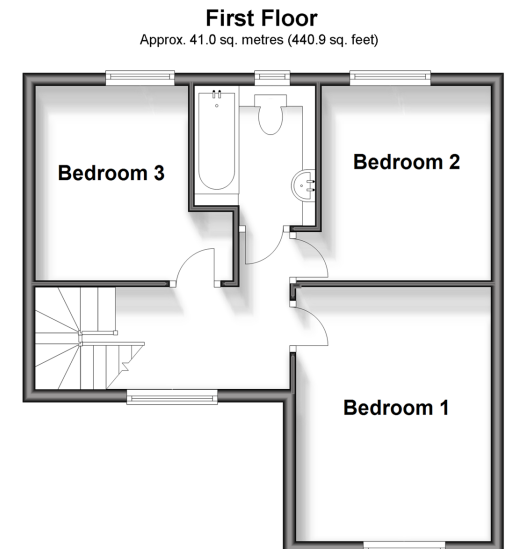
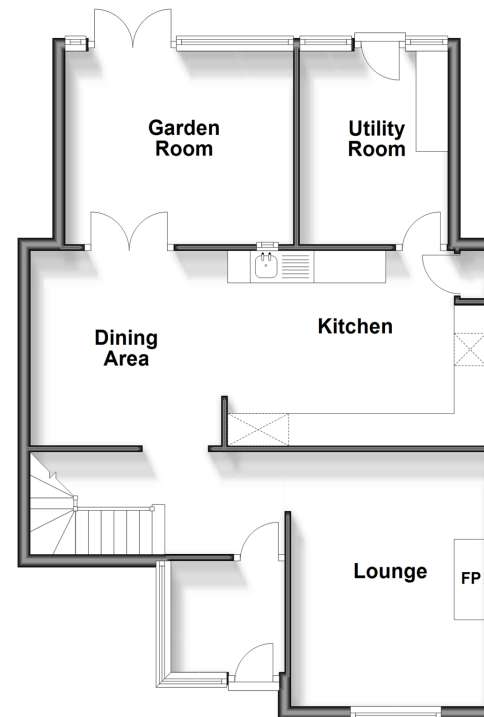
Front Porch
Entrance Hall
Lounge: 13'3 x 9'9 (4.04m x 2.97m)
Kitchen/Dining Area : 23'6 x 9'9 (7.17m x 2.97m)
Utility Room: 10'2 x 10'2 (3.10m x 3.10m)
Garden Room: 12'1 x 10'1 (3.69m x 3.08m)

FIRST FLOOR

Landing
Bedroom 1: 13'6 x 9'9 (4.12m x 2.97m)
Bedroom 2: 10'4 x 10'2 (3.15m x 3.10m)
Bedroom 3: 10'4 x 8'2 (3.15m x 2.49m)
Bathroom: 6'6 x 6'2 (1.98m x 1.88m)

OUTSIDE

Front Forecourt
Garden with outside Cabin



Call Portsmouth - 023 9266 1213 ■ cubittandwest.co.uk

■ Legal advice should be taken to verify fixtures/fittings, planning, alterations and/or lease details
■ Through a Homewise Home For Life Plan people aged 60+ can secure this property for up to 59% less, by purchasing a Lifetime Lease.

■ Appliances & services are untested, dimensions are approximate and floor plans are not to scale



41634463/20241007/MO1/MH