



**OVER 60?**

Secure this property  
for up to **59% less!**

**Price**  
**£230,000**

**Freehold**

3x  1x  2x 

**Beaulieu Road,  
Portsmouth, Hampshire,  
PO2**

**cubitt & west**  
Helping you move forwards





## Main features

- Spacious mid terrace bay and forecourt house
- Three separate living area on the ground floor
- Upstairs bathroom and downstairs cloakroom
- Private rear garden, fully enclosed
- Being offered with no forward chain

## Accommodation

### GROUND FLOOR

#### Entrance Hallway

Lounge: 11'10 x 9'10 (3.61m x 3.00m)

Kitchen: 11'5 x 7'8 (3.48m x 2.34m)

#### Cloakroom

Dining Room: 16'9 maximum x 9'0 (5.11m x 2.75m)

#### Conservatory

### FIRST FLOOR

#### Landing

Bedroom 1: 12'10 x 11'10 (3.91m x 3.61m)

Bedroom 2: 11'1 x 9'0 (3.38m x 2.75m)

Bedroom 3: 11'5 x 7'8 (3.48m x 2.34m)

#### Bathroom

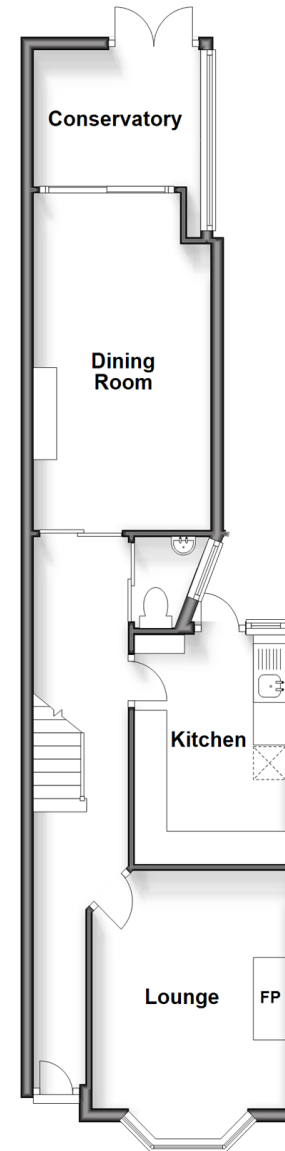
### OUTSIDE

#### Front Forecourt

#### Rear Garden

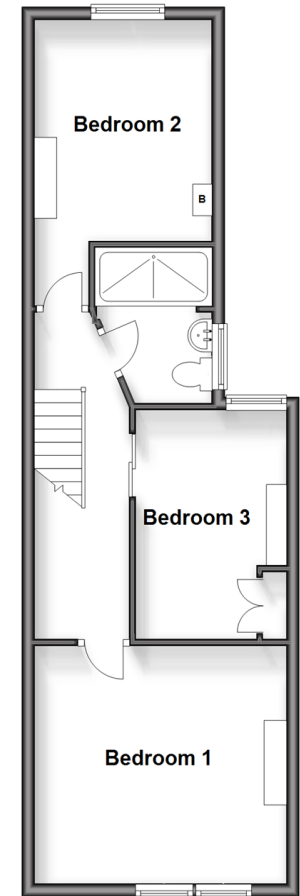
### Ground Floor

Approx. 51.5 sq. metres (554.2 sq. feet)



### First Floor

Approx. 44.4 sq. metres (478.3 sq. feet)



Call Portsmouth - 023 9266 1213 ■ [cubittandwest.co.uk](http://cubittandwest.co.uk)

- Legal advice should be taken to verify fixtures/fittings, planning, alterations and/or lease details
- Appliances & services are untested, dimensions are approximate and floor plans are not to scale
- Through a Homewise Home For Life Plan people aged 60+ can secure this property for up to 59% less, by purchasing a Lifetime Lease.



41634458/20241015/ZMG/MH