



Price
£250,000

Freehold

2x  1x  1x 

**Benham Drive,
Portsmouth, Hampshire,
PO3**

OVER 60?

Secure this property
for up to **59% less!**

cubitt & west
Helping you move forwards



Main features

- End of terraced house with allocated parking
- Modern decor throughout
- Sunny aspect bright rear garden
- Located in the popular location of Copnor
- Excellent public transport links in and out of the area

Accommodation

GROUND FLOOR

Entrance Porch

Lounge: 15'6 x 12'5 (4.73m x 3.79m)

Kitchen: 12'5 x 8'0 (3.79m x 2.44m)

FIRST FLOOR

Landing

Bedroom 1: 10'4 x 7'11 (3.15m x 2.41m)

Bedroom 2: 10'6 x 7'4 (3.20m x 2.24m)

Bathroom

OUTSIDE

Allocated Parking

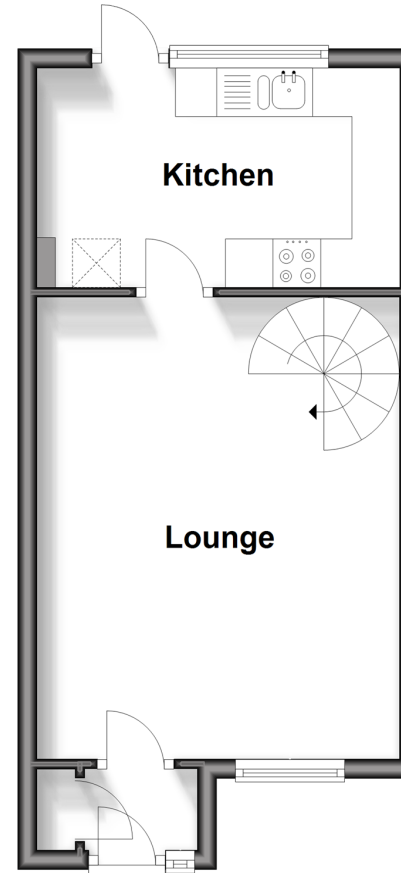
Rear Garden

Call Portsmouth - 023 9266 1213 ■ cubittandwest.co.uk

- Legal advice should be taken to verify fixtures/fittings, planning, alterations and/or lease details
- Appliances & services are untested, dimensions are approximate and floor plans are not to scale
- Through a Homewise Home For Life Plan people aged 60+ can secure this property for up to 59% less, by purchasing a Lifetime Lease.

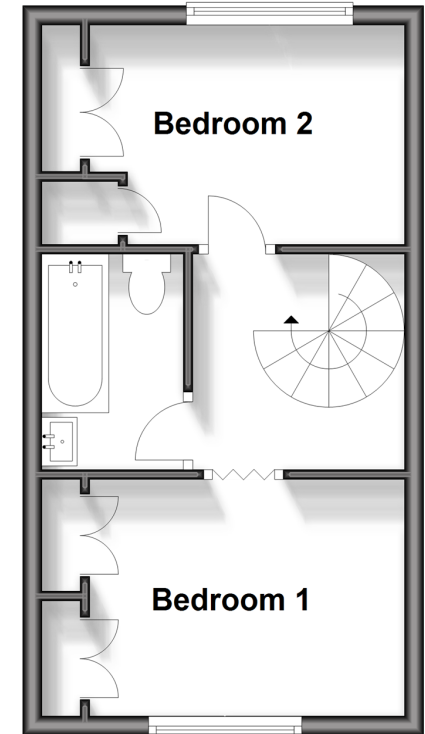
Ground Floor

Approx. 28.6 sq. metres (307.6 sq. feet)



First Floor

Approx. 27.0 sq. metres (290.7 sq. feet)



41630235/20241127/VB/VB