



Price
£350,000

Freehold

3x  1x  2x 

**Highbury Grove,
Portsmouth, Hampshire,
PO6**

OVER 60?

Secure this property
for up to **59% less!**

cubitt & west
Helping you move forwards



Main features

- Spacious family home being offered with no chain
- Three separate living spaces
- Upstairs bathroom and downstairs shower room
- Garage at the rear
- Sought after location with good access to train line

Accommodation

GROUND FLOOR

Entrance Hallway

Lounge: 17'7 x 13'8 (5.36m x 4.17m)

Kitchen: 11'9 x 6'8 (3.58m x 2.03m)

Dining Area: 12'9 x 10'7 (3.89m x 3.23m)

Conservatory Area: 11'6 x 10'1 (3.51m x 3.08m)

Utility/Shower Room: 7'1 x 7'1 (2.16m x 2.16m)

FIRST FLOOR

Landing

Bedroom 1: 17'7 x 13'8 (5.36m x 4.17m)

Bedroom 2: 11'9 x 8'6 (3.58m x 2.59m)

Bedroom 3: 12'1 x 8'6 (3.69m x 2.59m)

Bathroom

OUTSIDE

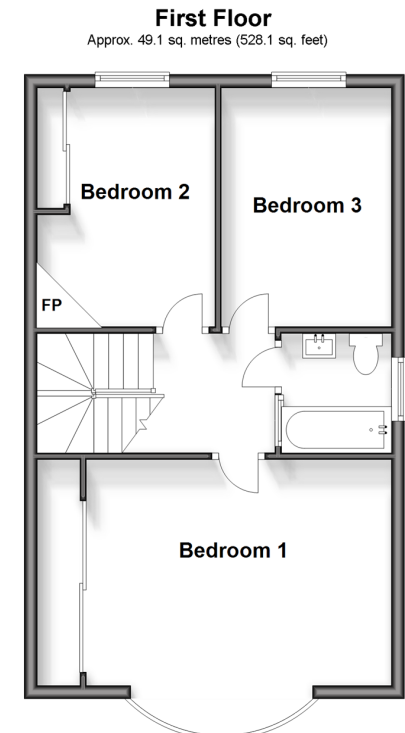
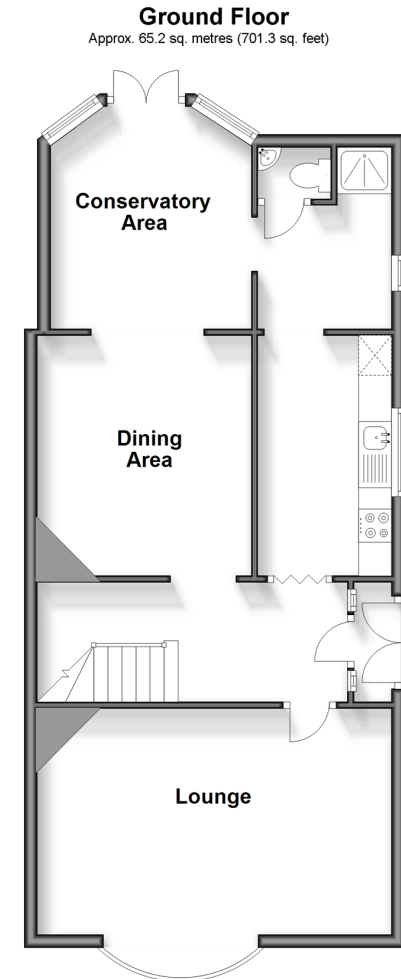
Off Road Parking

Rear Garden

Garage

Call Portsmouth - 023 9266 1213 ■ cubittandwest.co.uk

- Legal advice should be taken to verify fixtures/fittings, planning, alterations and/or lease details
- Appliances & services are untested, dimensions are approximate and floor plans are not to scale
- Through a Homewise Home For Life Plan people aged 60+ can secure this property for up to 59% less, by purchasing a Lifetime Lease.



41634630/20240924/MH/MH