



Price
£350,000

Freehold

3x  1x  2x 

**Grove Avenue, Fareham,
Hampshire, PO16**

OVER 60?

Secure this property
for up to **59% less!**

cubitt & west
Helping you move forwards



Main features

- Flexible accommodation split over two floors
- Situated very close to the waters edge
- Off road parking & garage to rear
- Plenty of scope to further develop subject to planning permission
- Vast garden area with a sunny aspect

Accommodation

GROUND FLOOR

Entrance Hallway

Lounge: 16'11 x 10'8 (5.16m x 3.25m)

Kitchen: 10'1 x 8'0 (3.08m x 2.44m)

Dining Room: 17'3 x 7'2 (5.26m x 2.19m)

Shower Room

Bedroom 1: 12'1 x 10'7 (3.69m x 3.23m)

Bedroom 3: 8'1 x 7'5 (2.47m x 2.26m)

FIRST FLOOR

Landing

Bedroom 2: 13'0 x 9'0 (3.97m x 2.75m)

OUTSIDE

Off Road Parking

Front & Rear Gardens

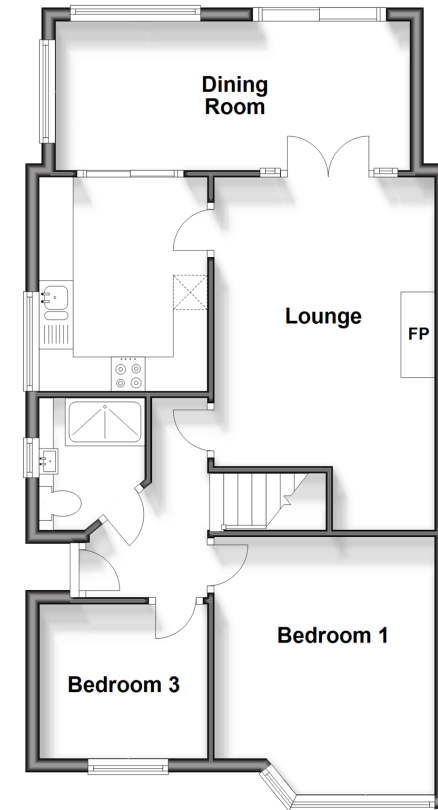
Garage

Call Portsmouth - 023 9266 1213 ■ cubittandwest.co.uk

- Legal advice should be taken to verify fixtures/fittings, planning, alterations and/or lease details
- Appliances & services are untested, dimensions are approximate and floor plans are not to scale
- Through a Homewise Home For Life Plan people aged 60+ can secure this property for up to 59% less, by purchasing a Lifetime Lease.

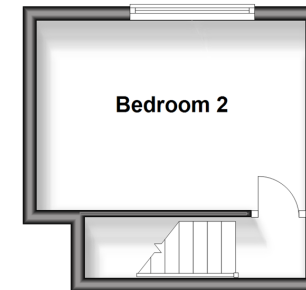
Ground Floor

Approx. 61.9 sq. metres (666.8 sq. feet)



First Floor

Approx. 14.3 sq. metres (153.5 sq. feet)



41634627/20240906/MO1/MH