



Price
£300,000

Freehold

3x  1x  2x 

**Copnor Road,
Portsmouth, Hampshire,
PO3**

OVER 60?

Secure this property
for up to **59% less!**

cubitt & west
Helping you move forwards



Main features

- Beautifully presented double bay and forecourt home
- Two separate living spaces on ground floor
- Conservatory opening onto sunny aspect rear garden
- Original features throughout
- Perfect for a growing family

Accommodation

GROUND FLOOR

Entrance Hallway

Lounge: 17'11 x 10'10 (5.46m x 3.30m)

Kitchen: 12'4 x 8'9 (3.76m x 2.67m)

Dining Room: 19'0 x 10'2 (5.80m x 3.10m)

Conservatory: 7'7 x 6'5 (2.31m x 1.96m)

Cloakroom

FIRST FLOOR

Landing

Bedroom 1: 17'11 x 13'3 (5.46m x 4.04m)

Bedroom 2: 14'8 x 9'10 (4.47m x 3.00m)

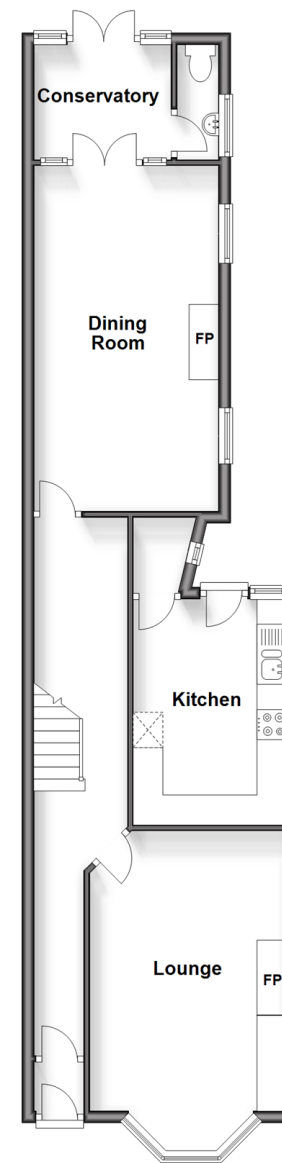
Bedroom 3: 12'6 x 8'9 (3.81m x 2.67m)

Bathroom

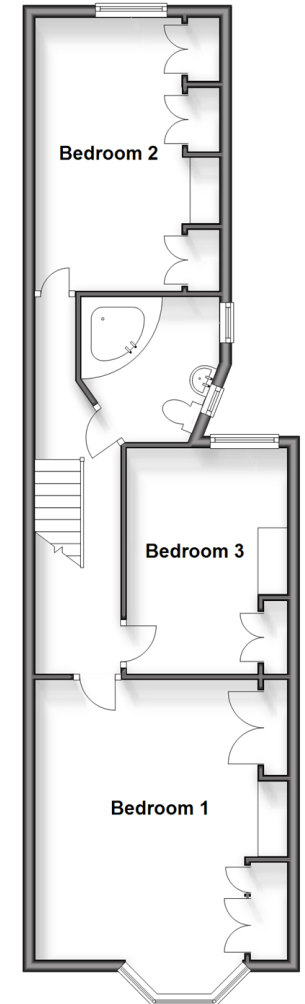
OUTSIDE

Rear Garden

Ground Floor
Approx. 64.3 sq. metres (692.4 sq. feet)



First Floor
Approx. 58.3 sq. metres (627.3 sq. feet)



Call Portsmouth - 023 9266 1213 ■ cubittandwest.co.uk

- Legal advice should be taken to verify fixtures/fittings, planning, alterations and/or lease details
- Appliances & services are untested, dimensions are approximate and floor plans are not to scale
- Through a Homewise Home For Life Plan people aged 60+ can secure this property for up to 59% less, by purchasing a Lifetime Lease.



41633570/20241024/MO1/MH