



Price
£220,000

Freehold

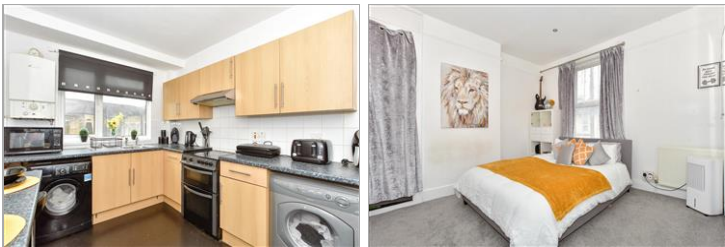
2x  1x  2x 

**Tottenham Road,
Portsmouth, Hampshire,
PO1**

OVER 60?

Secure this property
for up to **59% less!**

cubitt & west
Helping you move forwards



Main features

- Spacious home with upstairs bathroom
- Open plan living space on ground floor
- Private enclosed garden
- Central location, close to all amenities
- Ideal for first time buyers and investors

Accommodation

GROUND FLOOR

Entrance Hallway

Lounge/ Dining Area: 25'0 x 10'2
(7.63m x 3.10m)

Kitchen: 12'5 x 8'2 (3.79m x 2.49m)

FIRST FLOOR

Landing

Bedroom 1: 13'2 x 12'5 (4.02m x 3.79m)

Bedroom 2: 12'1 x 10'0 (3.69m x 3.05m)

Bathroom

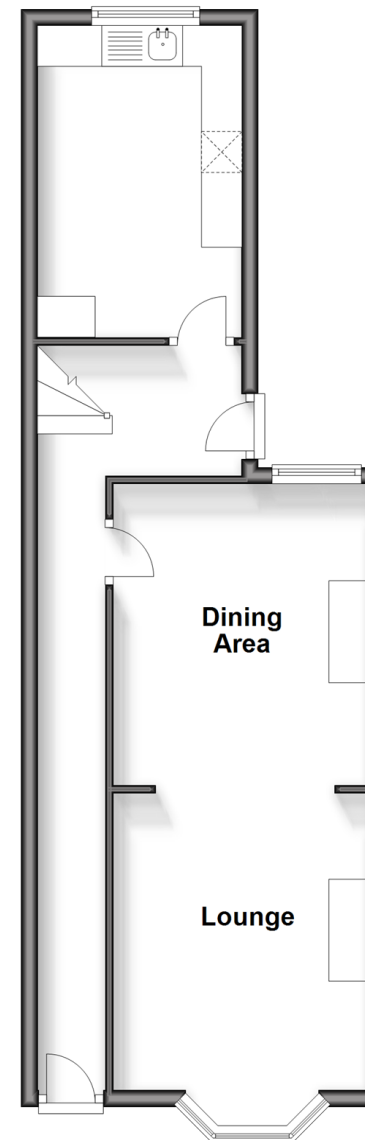
OUTSIDE

Front Forecourt

Rear Garden

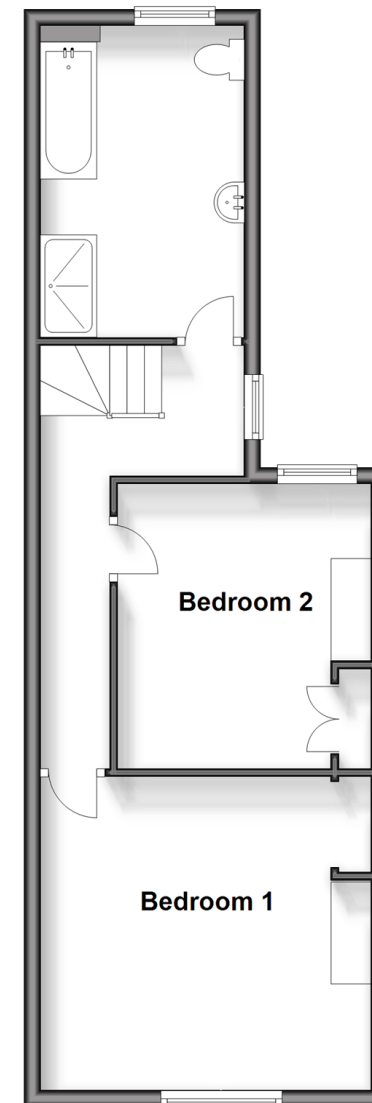
Ground Floor

Approx. 44.9 sq. metres (483.2 sq. feet)



First Floor

Approx. 44.7 sq. metres (481.3 sq. feet)



Call Portsmouth - 023 9266 1213 ■ cubittandwest.co.uk

- Legal advice should be taken to verify fixtures/fittings, planning, alterations and/or lease details
- Appliances & services are untested, dimensions are approximate and floor plans are not to scale
- Through a Homewise Home For Life Plan people aged 60+ can secure this property for up to 59% less, by purchasing a Lifetime Lease.



41634533/20240803/JG/MH