



**OVER 60?**

Secure this property  
for up to **59% less!**

**Price**  
**£300,000**

**Freehold**

3x  1x  2x 

**Northern Parade,  
Portsmouth, Hampshire,  
PO2**

**cubitt&west**  
Helping you move forwards





## Main features

- Impressive family home with plenty of scope to improve
- Spacious accommodation throughout
- Garage at the rear of property
- Sought after location, close to schools, leisure facilities and shops
- Offered with no forward chain

## Accommodation

### GROUND FLOOR

Entrance Hallway

Lounge: 17'3 x 13'10 (5.26m x 4.22m)

Dining Room: 18'0 x 11'4 (5.49m x 3.46m)

Kitchen: 11'8 x 8'10 (3.56m x 2.69m)

Lean To: 17'7 x 17'7 (5.36m x 5.36m)

Separate Toilet

### FIRST FLOOR

Landing

Bedroom 1: 17'2 x 12'3 (5.24m x 3.74m)

Bedroom 2: 14'6 x 11'4 (4.42m x 3.46m)

Bedroom 3: 11'7 x 8'11 (3.53m x 2.72m)

Bathroom

### OUTSIDE

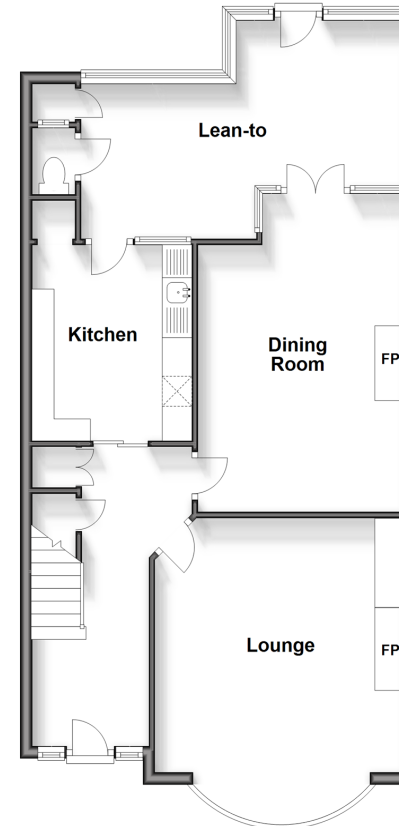
Front Forecourt

Rear Garden

Garage

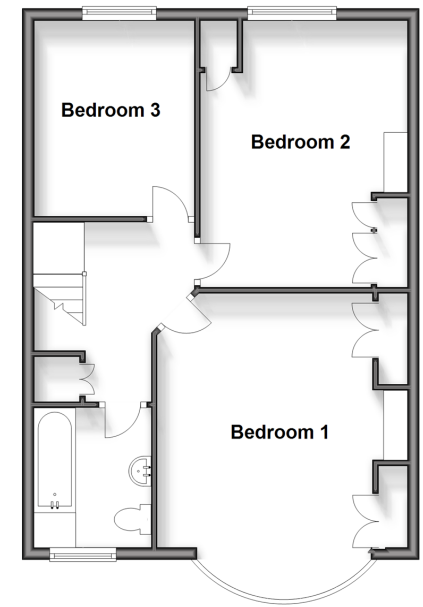
### Ground Floor

Approx. 74.9 sq. metres (806.2 sq. feet)



### First Floor

Approx. 55.9 sq. metres (601.7 sq. feet)



**Call Portsmouth - 023 9266 1213 ■ [cubittandwest.co.uk](http://cubittandwest.co.uk)**

- Legal advice should be taken to verify fixtures/fittings, planning, alterations and/or lease details
- Appliances & services are untested, dimensions are approximate and floor plans are not to scale
- Through a Homewise Home For Life Plan people aged 60+ can secure this property for up to 59% less, by purchasing a Lifetime Lease.



41634490/20240523/MO1/MH