



Price
£220,000

Freehold

2x  1x  2x 

**Emsworth Road, North
End, Portsmouth,
Hampshire, PO2**

OVER 60?

Secure this property
for up to **59% less!**

cubitt & west
Helping you move forwards



Main features

- Well presented mid terraced bay and forecourt property
- Upstairs bathroom
- Two separate living spaces
- Long rear garden, private and enclosed
- Offered for sale with no forward chain

Accommodation

GROUND FLOOR

Entrance Hallway

Dining Room: 10'10 x 8'10 (3.30m x 2.69m)

Lounge: 12'2 x 8'10 (3.71m x 2.69m)

Kitchen: 11'10 x 7'10 (3.61m x 2.39m)

FIRST FLOOR

Landing

Bedroom 1: 12'2 x 11'2 (3.71m x 3.41m)

Bedroom 2: 9'8 x 6'6 (2.95m x 1.98m)

Bathroom

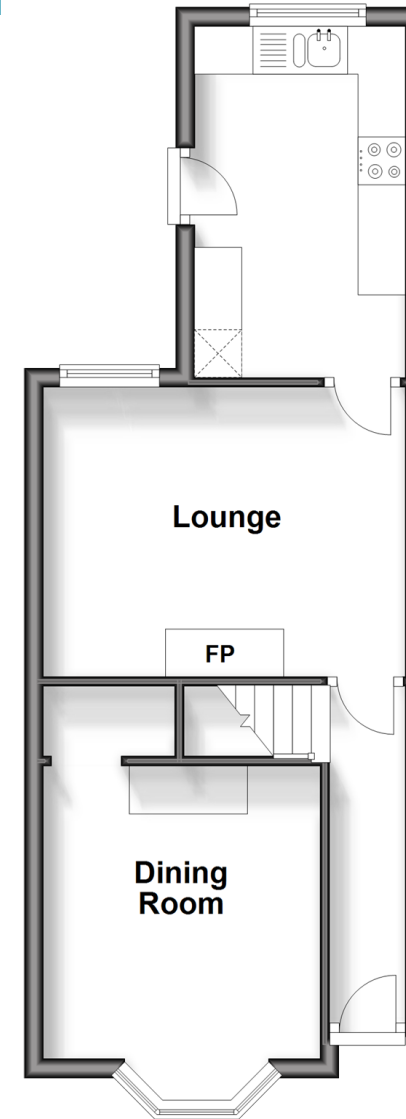
OUTSIDE

Front Forecourt

Rear Garden

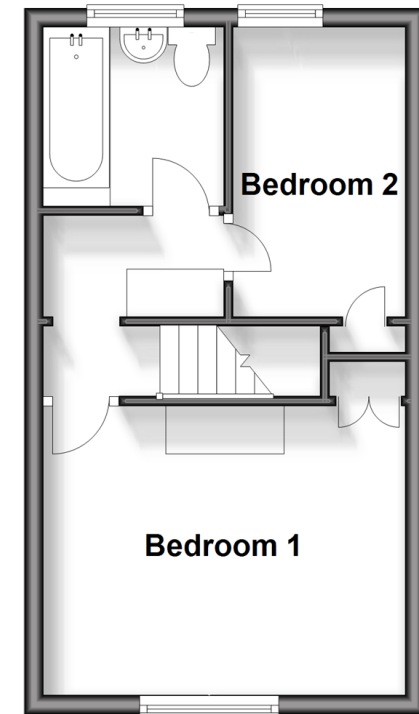
Ground Floor

Approx. 35.0 sq. metres (377.2 sq. feet)



First Floor

Approx. 26.7 sq. metres (287.8 sq. feet)



Call Portsmouth - 023 9266 1213 ■ cubittandwest.co.uk

- Legal advice should be taken to verify fixtures/fittings, planning, alterations and/or lease details
- Appliances & services are untested, dimensions are approximate and floor plans are not to scale
- Through a Homewise Home For Life Plan people aged 60+ can secure this property for up to 59% less, by purchasing a Lifetime Lease.



41634433/20240517/MO1/MH