



Price
£190,000

Freehold

2x  1x  1x 

**Hayling Avenue,
Portsmouth, Hampshire,
PO3**

OVER 60?

Secure this property
for up to **59% less!**

cubitt & west
Helping you move forwards



Main features

- Situated in the popular Baffins location, currently used as an air b&b
- Close to all your local daily amenities
- Good road links in and out of the area
- Excellent school and college catchment area
- No forward chain

Accommodation

GROUND FLOOR

Entrance

Lounge/Kitchen: 16'10 x 15'6 (5.13m x 4.73m)

FIRST FLOOR

Landing

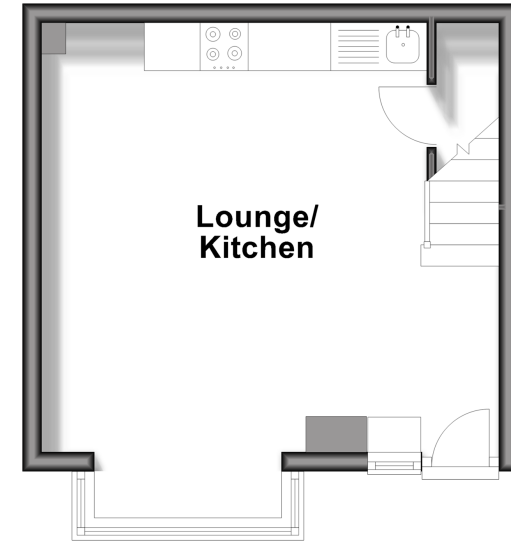
Bedroom 1: 11'2 x 9'10 (3.41m x 3.00m)

Bedroom 2: 11'10 x 5'2 (3.61m x 1.58m)

Bathroom

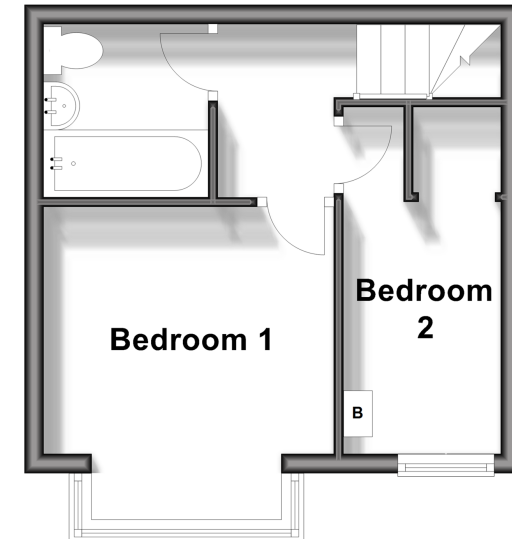
Ground Floor

Approx. 22.0 sq. metres (236.8 sq. feet)



First Floor

Approx. 22.0 sq. metres (236.9 sq. feet)



Call Portsmouth - 023 9266 1213 ■ cubittandwest.co.uk

- Legal advice should be taken to verify fixtures/fittings, planning, alterations and/or lease details
- Appliances & services are untested, dimensions are approximate and floor plans are not to scale
- Through a Homewise Home For Life Plan people aged 60+ can secure this property for up to 59% less, by purchasing a Lifetime Lease.



41634475/20240712/ZMG/SA