



Price
£310,000

Freehold

3x  2x  1x 

Aylen Road,
Portsmouth, Hampshire,
PO3

OVER 60?

Secure this property
for up to **59% less!**

cubitt & west
Helping you move forwards



Main features

- Spacious family home being offered with no forward chain
- Open plan living accommodation on the ground floor
- Additional loft space, being used as extra bedroom
- Mature rear garden, brick built shed with electrics
- Solar panels (owned)
- Garage with electric roller door

Accommodation

GROUND FLOOR

Entrance Hallway
 Lounge: 14'2 x 11'0 (4.32m x 3.36m)
 Kitchen/Diner: 16'5 x 12'2 (5.01m x 3.71m)
 Sun Room: 13'10 x 8'8 (4.22m x 2.64m)
 Cloakroom/ Shower

FIRST FLOOR

Landing
 Bedroom 1: 14'7 x 11'4 (4.45m x 3.46m)
 Bedroom 2: 11'8 x 9'5 (3.56m x 2.87m)
 Bedroom 3: 8'9 x 5'5 (2.67m x 1.65m)
 Shower Room

SECOND FLOOR

Loft Space

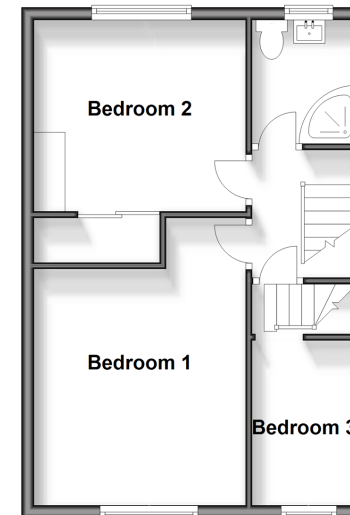
OUTSIDE

Front Forecourt
 Rear Garden
 Garage

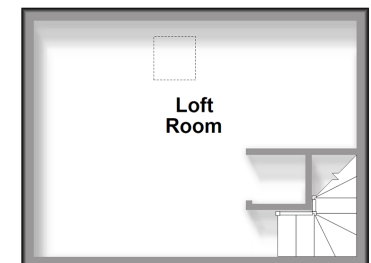
Ground Floor
 Approx. 52.8 sq. metres (568.5 sq. feet)



First Floor
 Approx. 39.5 sq. metres (425.3 sq. feet)



Second Floor
 Approx. 19.2 sq. metres (206.8 sq. feet)



Call Portsmouth - 023 9266 1213 ■ cubittandwest.co.uk

■ Legal advice should be taken to verify fixtures/fittings, planning, alterations and/or lease details
 ■ Through a Homewise Home For Life Plan people aged 60+ can secure this property for up to 59% less, by purchasing a Lifetime Lease.

■ Appliances & services are untested, dimensions are approximate and floor plans are not to scale



41634469/20240614/JG/MH