



Price
£315,000

Freehold

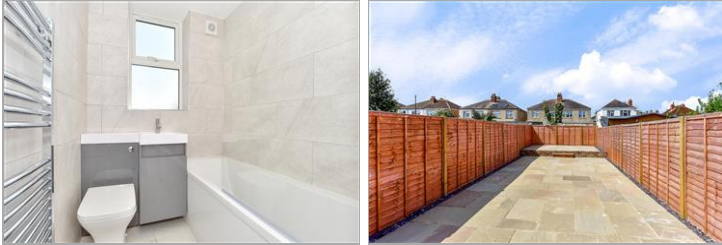
3x  1x  2x 

**Crofton Road,
Portsmouth, Hampshire,
PO2**

OVER 60?

Secure this property
for up to **59% less!**

cubitt & west
Helping you move forwards



Main features

- Immaculately presented family home
- Hi-spec fixtures and fittings throughout
- Low maintenance rear garden
- Open plan living accommodation on the ground floor
- No forward chain

Accommodation

GROUND FLOOR

Entrance Hallway

Lounge: 15'3 x 10'6 (4.65m x 3.20m)

Dining Area: 13'9 x 13'6 (4.19m x 4.12m)

Separate Toilet

Kitchen/Breakfast Area: 16'3 x 15'6 (4.96m x 4.73m)

FIRST FLOOR

Landing

Bedroom 1: 12'4 x 10'6 (3.76m x 3.20m)

Bedroom 2: 12'8 x 8'7 (3.86m x 2.62m)

Bedroom 3: 10'2 x 7'4 (3.10m x 2.24m)

Bathroom

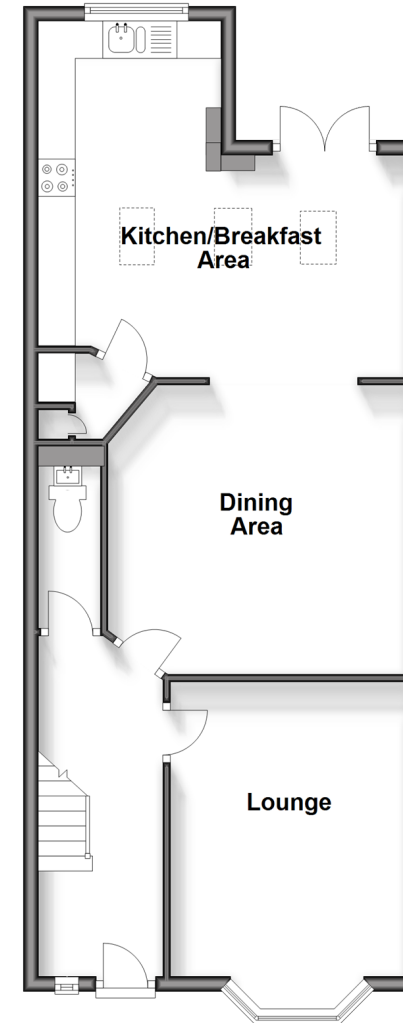
OUTSIDE

Front Forecourt

Rear Garden

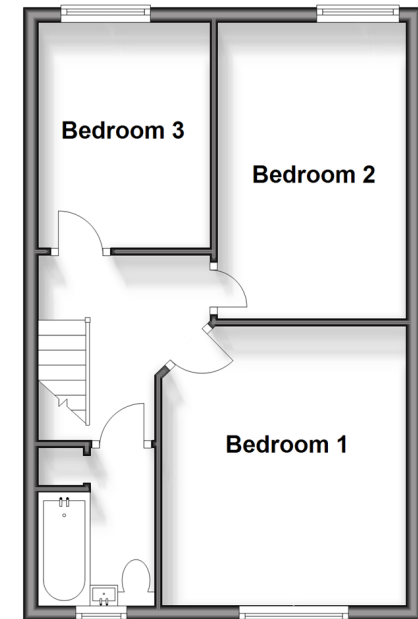
Ground Floor

Approx. 59.2 sq. metres (637.3 sq. feet)



First Floor

Approx. 38.8 sq. metres (417.4 sq. feet)



Call Portsmouth - 023 9266 1213 ■ cubittandwest.co.uk

- If buying to let, the energy rating will need to be improved to at least 'E' rating before you can let the property
- Legal advice should be taken to verify fixtures/fittings, planning, alterations and/or lease details
- Appliances & services are untested, dimensions are approximate and floor plans are not to scale
- Through a Homewise Home For Life Plan people aged 60+ can secure this property for up to 59% less, by purchasing a Lifetime Lease.



41634477/20240510/MO1/MH