



OVER 60?

Secure this property
for up to **59% less!**

Price
£150,000

Freehold

2x  1x  2x 

**St. Stephen's Road,
Portsmouth, Hampshire,
PO2**

cubitt & west
Helping you move forwards

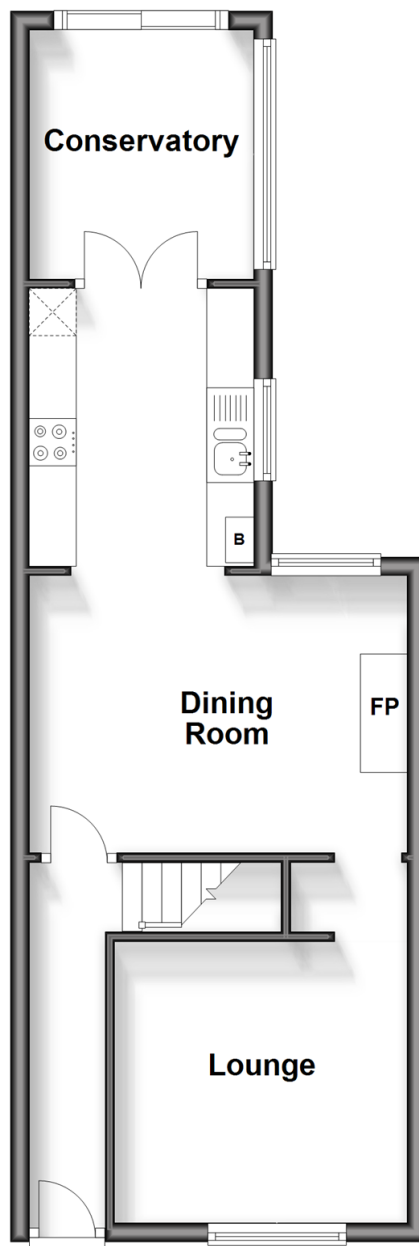


Main features

- Mid terraced house in need of modernisation
- Two living spaces on the ground floor
- Upstairs bathroom
- Opportunity to buy no 11 as 1 single separate unit
- Offered with no forward chain

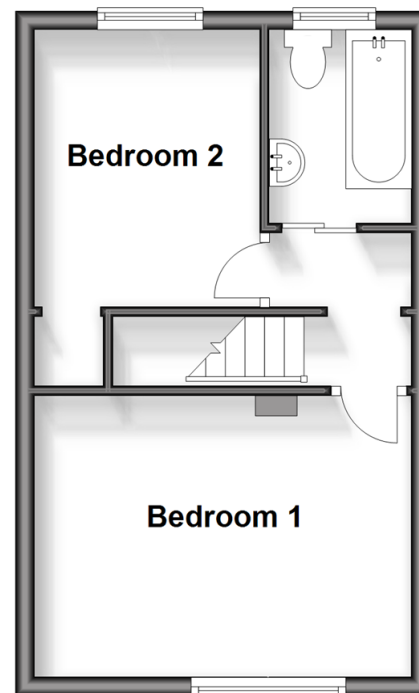
Ground Floor

Approx. 41.2 sq. metres (443.8 sq. feet)



First Floor

Approx. 27.5 sq. metres (295.7 sq. feet)



Accommodation

GROUND FLOOR

Entrance Hallway

Lounge: 13'3 x 8'2 (4.04m x 2.49m)

Dining Room: 11'3 x 9'2 (3.43m x 2.80m)

Kitchen: 9'11 x 7'9 (3.02m x 2.36m)

Conservatory: 8'10 x 8'5 (2.69m x 2.57m)

FIRST FLOOR

Landing

Bedroom 1: 13'3 x 10'2 (4.04m x 3.10m)

Bedroom 2: 9'8 x 7'11 (2.95m x 2.41m)

Bathroom

OUTSIDE

Rear Garden

Call Portsmouth - 023 9266 1213 ■ cubittandwest.co.uk

- If buying to let, the energy rating will need to be improved to at least 'E' rating before you can let the property
- Appliances & services are untested, dimensions are approximate and floor plans are not to scale

- Legal advice should be taken to verify fixtures/fittings, planning, alterations and/or lease details
- Through a Homewise Home For Life Plan people aged 60+ can secure this property for up to 59% less, by purchasing a Lifetime Lease.



41634448/20240502/MO1/MH