

**Price**  
**£320,000**

**Freehold**

3x  1x  2x 

**Allcot Road, Copnor,  
Portsmouth, Hampshire,  
PO3**

**OVER 60?**

Secure this property  
for up to **59% less!**

**cubitt & west**  
Helping you move forwards



## Main features

- Family home situated in a highly requested location
- Flexible accommodation throughout
- Generous garage at rear of the property
- Modern fixtures and fittings throughout
- Excellent school and college catchment

## Accommodation

### GROUND FLOOR

Entrance Hallway

Lounge: 14'1 x 13'4 (4.30m x 4.07m)

Dining Room: 12'0 x 10'4 (3.66m x 3.15m)

Kitchen: 16'5 x 7'9 (5.01m x 2.36m)

Utility Room: 12'1 x 9'0 (3.69m x 2.75m)

### FIRST FLOOR

Landing

Bedroom 1: 14'0 x 13'2 (4.27m x 4.02m)

Bedroom 2: 13'0 x 11'3 (3.97m x 3.43m)

Bedroom 3: 7'5 x 6'6 (2.26m x 1.98m)

Bathroom: 7'0 x 6'3 (2.14m x 1.91m)

### OUTSIDE

Front Forecourt

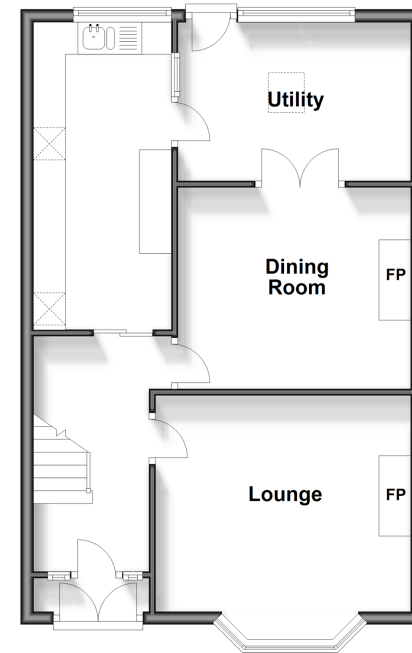
Rear Garden

Garage

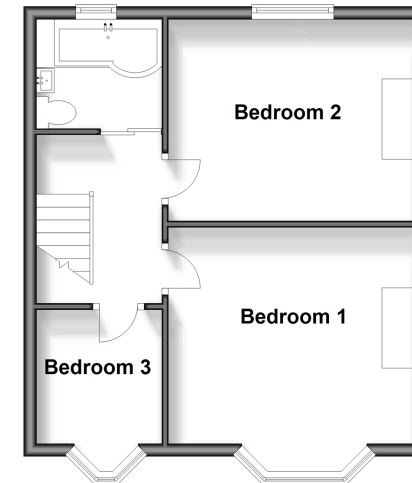
**Call Portsmouth - 023 9266 1213 ■ [cubittandwest.co.uk](http://cubittandwest.co.uk)**

- Legal advice should be taken to verify fixtures/fittings, planning, alterations and/or lease details
- Appliances & services are untested, dimensions are approximate and floor plans are not to scale
- Through a Homewise Home For Life Plan people aged 60+ can secure this property for up to 59% less, by purchasing a Lifetime Lease.

**Ground Floor**  
Approx. 54.5 sq. metres (586.2 sq. feet)



**First Floor**  
Approx. 39.3 sq. metres (422.9 sq. feet)



41633542/20240501/MO1/MH