



Price
£305,000

Freehold

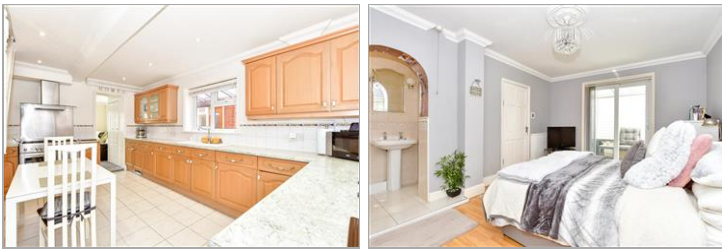
3x  2x  2x 

**Horsea Road,
Portsmouth, Hampshire,
PO2**

OVER 60?

Secure this property
for up to **59% less!**

cubitt & west
Helping you move forwards



Main features

- Beautifully presented family home
- Significantly extended to the rear
- Spacious kitchen and breakfast area
- En-suite to bedroom 1 with outside balcony
- Offered for sale with no forward chain

Accommodation

GROUND FLOOR

Entrance Hall

Kitchen: 15'9 x 12'1 (4.80m x 3.69m)

Lounge: 15'9 x 11'4 (4.80m x 3.46m)

Dining Room: 22'2 x 11'6 (6.76m x 3.51m)

Conservatory: 9'5 x 8'8 (2.87m x 2.64m)

FIRST FLOOR

Landing

Bedroom 1: 15'2 x 11'1 (4.63m x 3.38m)

Balcony

En-Suite Shower Room

Bedroom 2: 15'8 x 11'9 (4.78m x 3.58m)

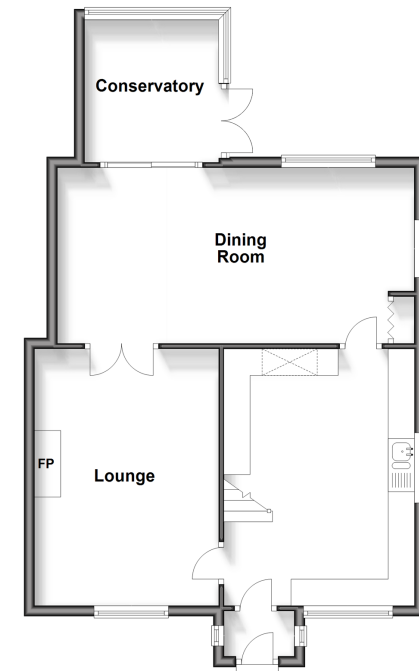
Bedroom 3: 11'4 x 8'4 (3.46m x 2.54m)

Bathroom

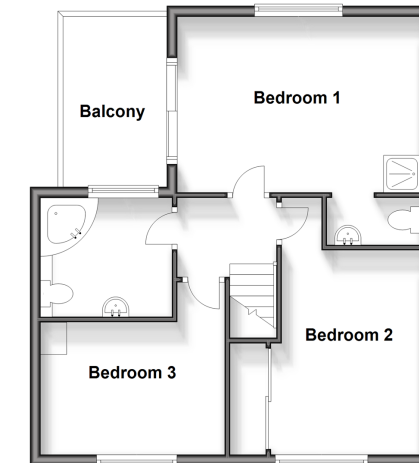
OUTSIDE

Front & Rear Gardens

Ground Floor
Approx. 66.5 sq. metres (715.5 sq. feet)



First Floor
Approx. 50.7 sq. metres (545.8 sq. feet)



Call Portsmouth - 023 9266 1213 ■ cubittandwest.co.uk

- If buying to let, the energy rating will need to be improved to at least 'E' rating before you can let the property
- Legal advice should be taken to verify fixtures/fittings, planning, alterations and/or lease details
- Appliances & services are untested, dimensions are approximate and floor plans are not to scale
- Through a Homewise Home For Life Plan people aged 60+ can secure this property for up to 59% less, by purchasing a Lifetime Lease.



41634409/20240521/YH/MH