



OVER 60?

Secure this property
for up to **59% less!**

Price
£345,000

Freehold

3x  1x  1x 

**Oriel Road, Portsmouth,
Hampshire, PO2**

cubitt & west
Helping you move forwards



Main features

- Stunning Victorian double bay and forecourt home
- Generous space being offered throughout
- Hi spec finish
- Downstairs shower room and upstairs bathroom
- Offered with no forward chain

Accommodation

GROUND FLOOR

Entrance Hallway

Lounge: 17'6 x 13'8 (5.34m x 4.17m)

Dining Room: 16'0 x 11'3 (4.88m x 3.43m)

Kitchen: 11'0 x 7'0 (3.36m x 2.14m)

Utility: 7'7 x 5'10 (2.31m x 1.78m)

Shower Room

FIRST FLOOR

Landing

Bedroom 1: 17'6 x 13'7 (5.34m x 4.14m)

Bedroom 2: 14'10 x 9'10 (4.52m x 3.00m)

Bedroom 3: 11'0 x 9'4 (3.36m x 2.85m)

Bathroom

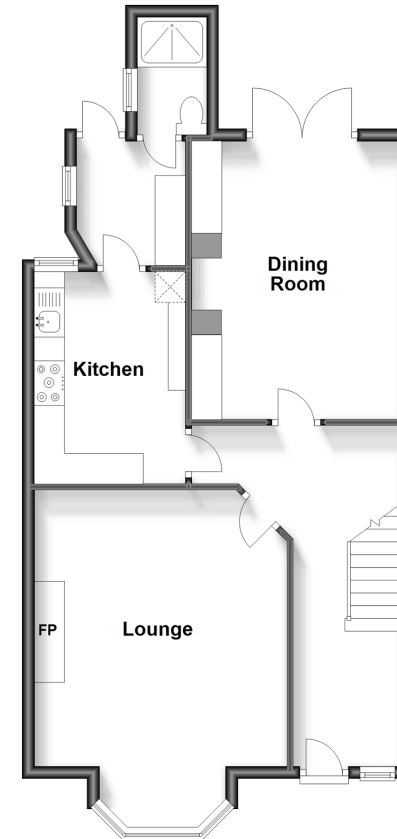
OUTSIDE

Front Forecourt

Rear Garden

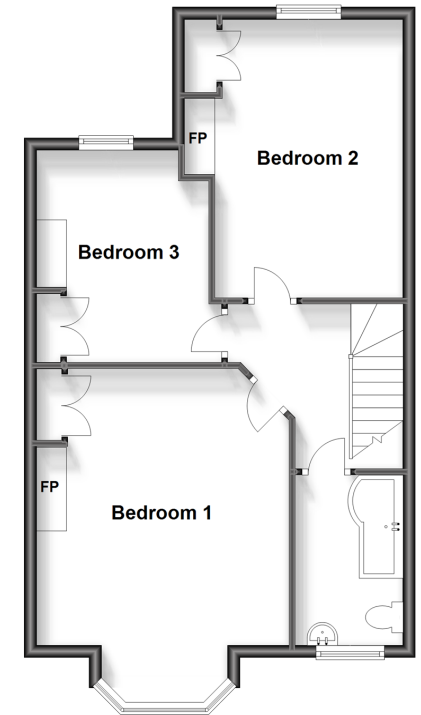
Ground Floor

Approx. 63.6 sq. metres (684.5 sq. feet)



First Floor

Approx. 57.7 sq. metres (621.1 sq. feet)



Call Portsmouth - 023 9266 1213 ■ cubittandwest.co.uk

- Legal advice should be taken to verify fixtures/fittings, planning, alterations and/or lease details
- Appliances & services are untested, dimensions are approximate and floor plans are not to scale
- Through a Homewise Home For Life Plan people aged 60+ can secure this property for up to 59% less, by purchasing a Lifetime Lease.



41634364/20240221/MO1/MH