



Price
£345,000

Freehold

3x  1x  1x 

**Chatsworth Avenue,
Cosham, Portsmouth,
Hampshire, PO6**

OVER 60?

Secure this property
for up to **59% less!**

cubitt & west
Helping you move forwards



Main features

- Immaculately presented family home
- Two spacious living spaces, offering ultra flexible accommodation
- Potential to further develop semi converted loft, subject to planning
- Modern fixtures and fittings throughout
- Sought after location, close to schools, shops and train line

Accommodation

GROUND FLOOR

Entrance Hallway

- Lounge: 15'8 x 11'1 (4.78m x 3.38m)
- Dining Room: 14'7 x 12'5 (4.45m x 3.79m)
- Kitchen: 19'0 x 9'10 (5.80m x 3.00m)
- Utility Room: 7'4 x 5'11 (2.24m x 1.80m)
- Cloakroom

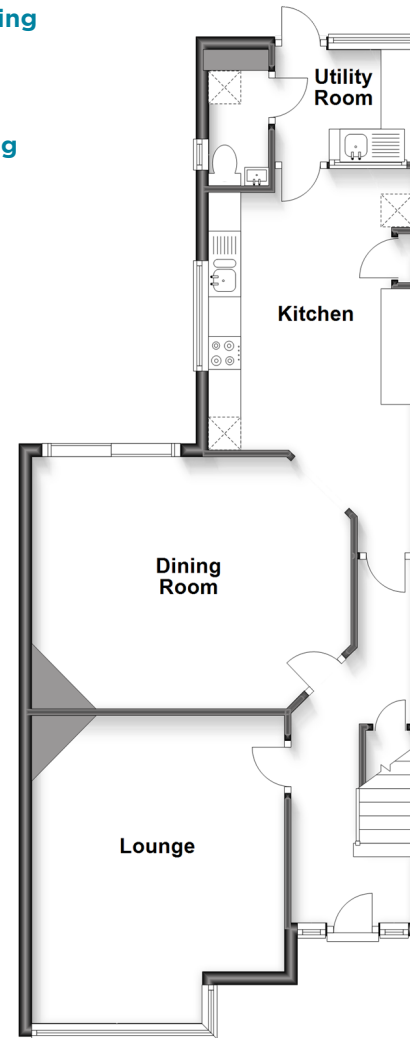
FIRST FLOOR

- Landing
- Bedroom 1: 12'8 x 11'8 (3.86m x 3.56m)
- Bedroom 2: 12'1 x 9'7 (3.69m x 2.92m)
- Bedroom 3: 7'11 x 7'9 (2.41m x 2.36m)
- Bathroom

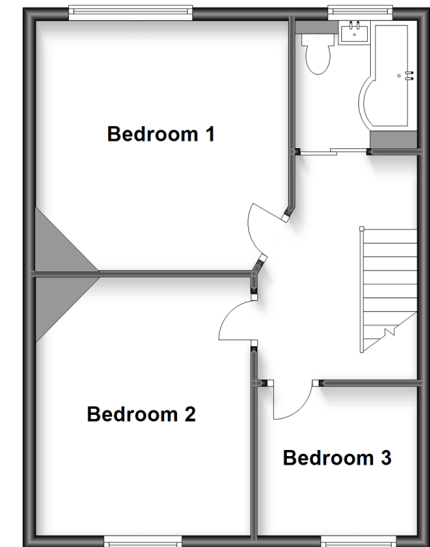
OUTSIDE

- Driveway/Parking
- Rear Garden

Ground Floor
Approx. 66.6 sq. metres (716.8 sq. feet)



First Floor
Approx. 46.3 sq. metres (498.8 sq. feet)



Call Portsmouth - 023 9266 1213 ■ cubittandwest.co.uk

- Legal advice should be taken to verify fixtures/fittings, planning, alterations and/or lease details
- Appliances & services are untested, dimensions are approximate and floor plans are not to scale
- Through a Homewise Home For Life Plan people aged 60+ can secure this property for up to 59% less, by purchasing a Lifetime Lease.



41634368/20240214/MO1/MH