

Price
£380,000

Freehold

3x  1x  2x 

**Solent Road,
Portsmouth, Hampshire,
PO6**

OVER 60?

Secure this property
for up to **59% less!**

cubitt & west
Helping you move forwards



Main features

- Beautifully maintained end of terraced house
- Ample off street parking
- Additional hard standing & garage at the rear
- Useful loft room, ideal for home office or craft room
- Spacious sun room overlooking the landscaped garden

Accommodation

GROUND FLOOR

Entrance Porch: 13'8 x 7'2 (4.17m x 2.19m)
 Lounge/Diner: 26'10 x 10'2 (8.18m x 3.10m)
 Kitchen: 12'5 x 7'8 (3.79m x 2.34m)
 Sun Room: 17'2 x 10'6 (5.24m x 3.20m)
 Cloakroom

FIRST FLOOR

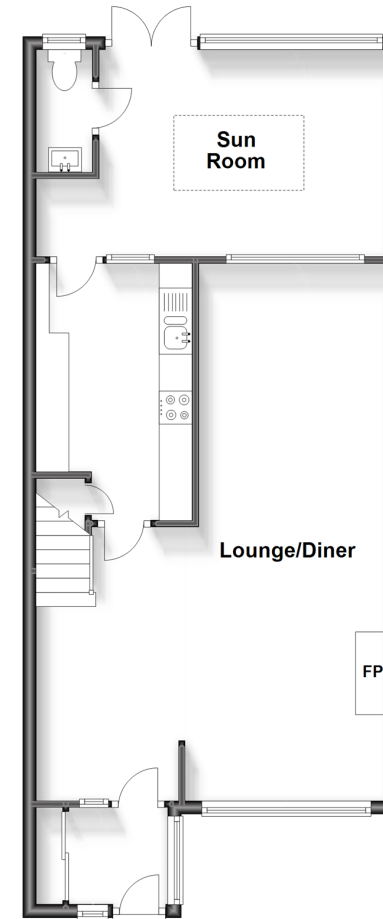
Landing
 Bedroom 1: 12'2 x 10'2 (3.71m x 3.10m)
 Bedroom 2: 10'11 x 8'9 (3.33m x 2.67m)
 Bedroom 3: 9'3 x 7'2 (2.82m x 2.19m)
 Bathroom : 8'7 x 5'5 (2.62m x 1.65m)
 Loft Room: 13'1 x 11'8 (3.99m x 3.56m)

OUTSIDE

Off Road Parking
 Rear Garden
 Garage And Hardstanding: 18'1 x 8'7 (5.52m x 2.62m)

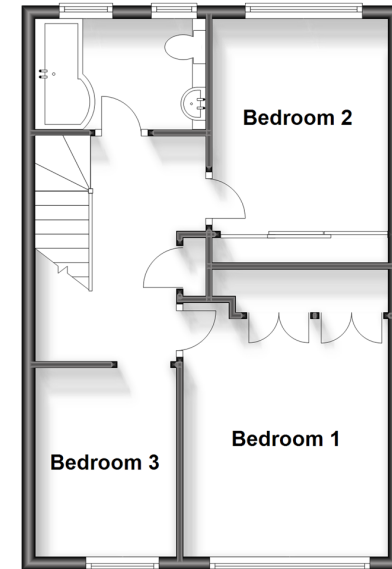
Ground Floor

Approx. 63.9 sq. metres (688.0 sq. feet)



First Floor

Approx. 43.5 sq. metres (468.2 sq. feet)



Call Portsmouth - 023 9266 1213 ■ cubittandwest.co.uk

- Legal advice should be taken to verify fixtures/fittings, planning, alterations and/or lease details
- Appliances & services are untested, dimensions are approximate and floor plans are not to scale
- Through a Homewise Home For Life Plan people aged 60+ can secure this property for up to 59% less, by purchasing a Lifetime Lease.



41118894/20231016/ZMG/MH