



OVER 60?

Secure this property
for up to **59% less!**

Price

£300,000

Freehold

3x  1x  1x 

**Doyle Avenue, North
End, Portsmouth, Hants,
PO2**

cubitt & west
Helping you move forwards



Main features

- Generous living accommodation throughout including large converted loft room
- Freshly decorated with a modern finish
- Shared drive and garage to rear
- Excellent transport links in and out of the city
- Great school catchment area

Accommodation

GROUND FLOOR

- Entrance Porch
- Hallway
- Lounge: 14'4 x 12'2 (4.37m x 3.71m)
- Kitchen/Diner: 18'6 x 14'3 (5.64m x 4.35m)
- Conservatory: 13'8 x 6'6 (4.17m x 1.98m)
- Cloakroom

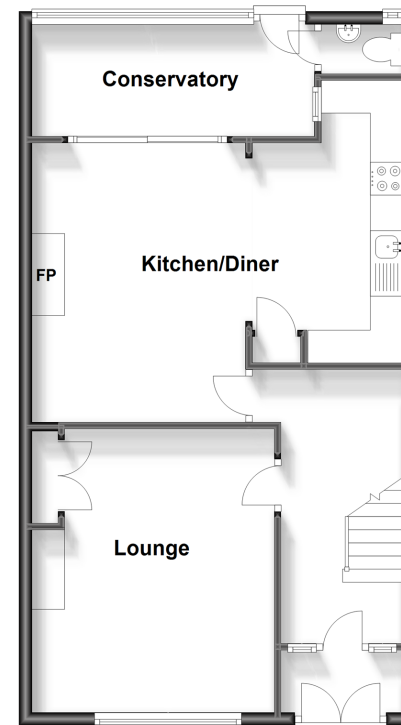
FIRST FLOOR

- Landing
- Bedroom 1: 14'4 x 11'4 (4.37m x 3.46m)
- Bedroom 2: 14'2 x 11'1 (4.32m x 3.38m)
- Bedroom 3: 8'0 x 6'9 (2.44m x 2.06m)
- Bathroom: 6'9 x 5'9 (2.06m x 1.75m)

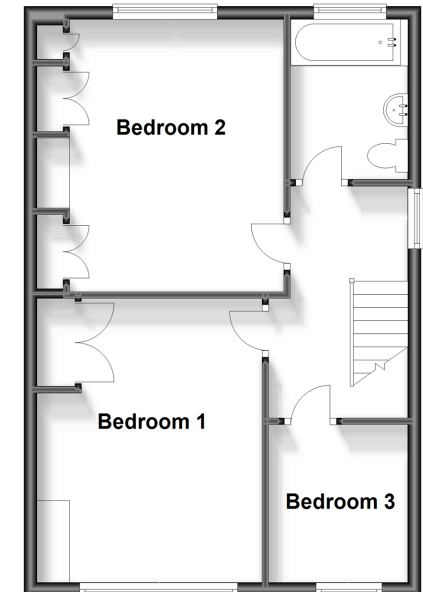
OUTSIDE

- Front Forecourt
- Rear Garden
- Garage

Ground Floor
Approx. 59.7 sq. metres (642.1 sq. feet)



First Floor
Approx. 48.8 sq. metres (524.8 sq. feet)



Call Portsmouth - 023 9266 1213 ■ cubittandwest.co.uk

- Legal advice should be taken to verify fixtures/fittings, planning, alterations and/or lease details
- Appliances & services are untested, dimensions are approximate and floor plans are not to scale
- Through a Homewise Home For Life Plan people aged 60+ can secure this property for up to 59% less, by purchasing a Lifetime Lease.



41618377/20231017/ZMG/ZMG