



**Price**  
**£135,000**

**Leasehold**

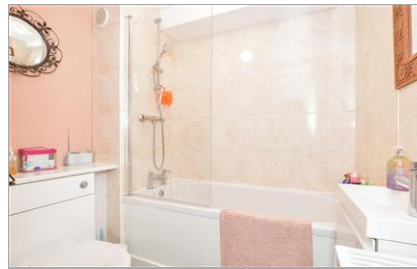
1x  1x  1x 

**The Forum, Chidham  
Close, Havant,  
Hampshire, PO9**

**OVER 60?**

Secure this property  
for up to **59% less!**

**cubitt&west**  
Helping you move forwards



## Main features

- Beautifully presented purpose built flat with allocated parking
- Walking distance to Havant town centre and train station
- Perfect for first time buyers
- No forward chain
- Low maintenance costs and a long lease

## Accommodation

### SECOND FLOOR

#### Hallway

Lounge: 15'7 x 10'5 (4.75m x 3.18m)

Kitchen: 10'0 x 5'5 (3.05m x 1.65m)

Bedroom: 12'5 x 10'9 (3.79m x 3.28m)

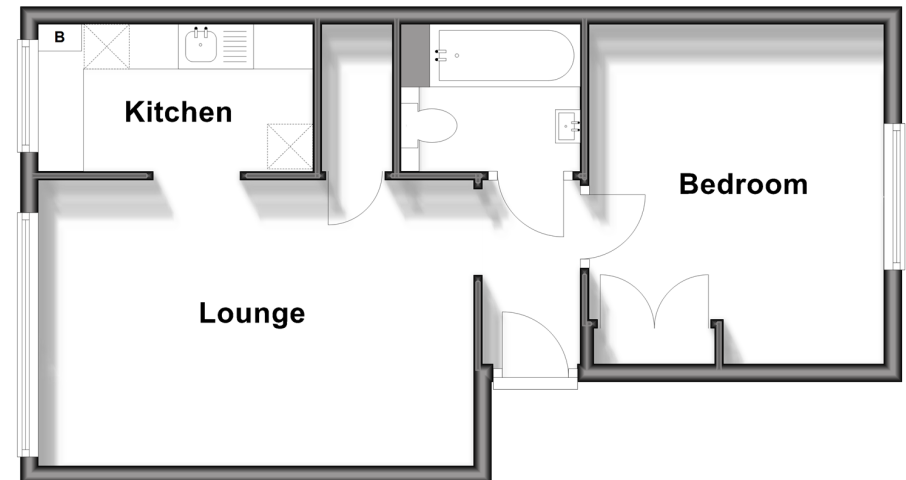
Bathroom

### OUTSIDE

Allocated Parking

### Second Floor

Approx. 41.1 sq. metres (442.9 sq. feet)



**Call Havant - 023 92492708 ■ [cubittandwest.co.uk](http://cubittandwest.co.uk)**

■ Legal advice should be taken to verify fixtures/fittings, planning, alterations and/or lease details  
 ■ Through a Homewise Home For Life Plan people aged 60+ can secure this property for up to 59% less, by purchasing a Lifetime Lease.

■ Appliances & services are untested, dimensions are approximate and floor plans are not to scale