



**Price**  
**£280,000**

**Freehold**

2x  1x  1x 

**New Road, Havant,  
Hampshire, PO9**

**OVER 60?**

Secure this property  
for up to **59% less!**

**cubitt&west**  
Helping you move forwards



## Main features

- Modern cottage style home
- Open plan living with a separate utility room
- Close to Havant town centre and train station
- French doors open onto the large rear garden
- Garage and driveway for multiple cars

## Accommodation

### GROUND FLOOR

Hallway

Utility Room With Toilet

Kitchen/Diner: 17'9 x 10'4 (5.41m x 3.15m)

Lounge: 13'8 x 10'4 (4.17m x 3.15m)

### FIRST FLOOR

Landing

Bedroom 1: 10'3 x 8'1 (3.13m x 2.47m)

Bedroom 2: 7'10 x 6'11 (2.39m x 2.11m)

Bathroom

### OUTSIDE

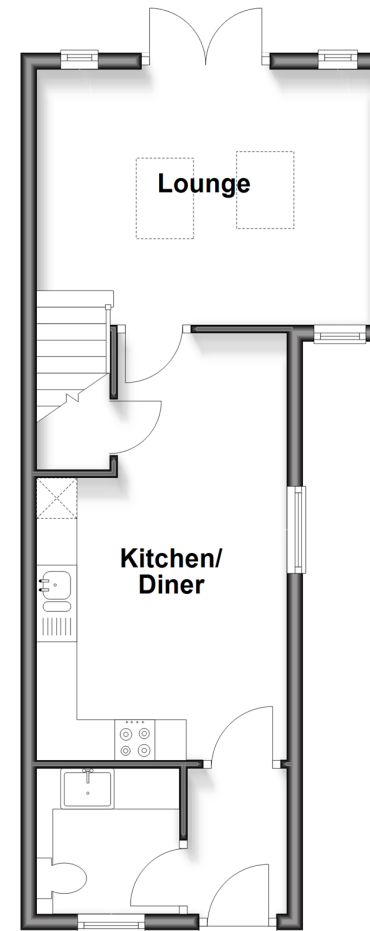
Rear Garden

Garage

Driveway

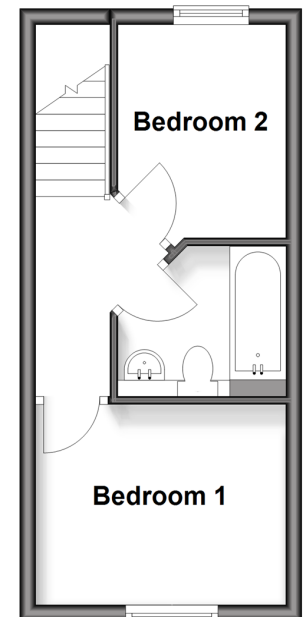
### Ground Floor

Approx. 35.7 sq. metres (384.1 sq. feet)



### First Floor

Approx. 22.3 sq. metres (239.7 sq. feet)



**Call Havant - 023 92492708 ■ [cubittandwest.co.uk](http://cubittandwest.co.uk)**

- Legal advice should be taken to verify fixtures/fittings, planning, alterations and/or lease details
- Appliances & services are untested, dimensions are approximate and floor plans are not to scale
- Through a Homewise Home For Life Plan people aged 60+ can secure this property for up to 59% less, by purchasing a Lifetime Lease.



41129435/20250220/DG1/LS1