



Guide Price

£345,000

Freehold

3x  1x  3x 

**Cotswold Close, Havant,
Hampshire, PO9**

OVER 60?

Secure this property
for up to **59% less!**

cubitt & west
Helping you move forwards



Main features

- Fabulous home for a growing family
- Located in a quiet cul-de-sac
- Flexible living accommodation
- Driveway for multiple vehicles
- Close to local amenities and travel links
- Short walk to Staunton Country Park
- Catchment area for osted rated excellence school

Accommodation

GROUND FLOOR

Entrance Porch
 Lounge: 23'1 x 15'4 (7.04m x 4.68m)
 Dining Room: 16'5 x 9'11 (5.01m x 3.02m)
 Kitchen: 11'7 x 11'5 (3.53m x 3.48m)
 Utility Room
 Toilet
 Games Room: 12'0 x 7'1 (3.66m x 2.16m)
 Garden Room

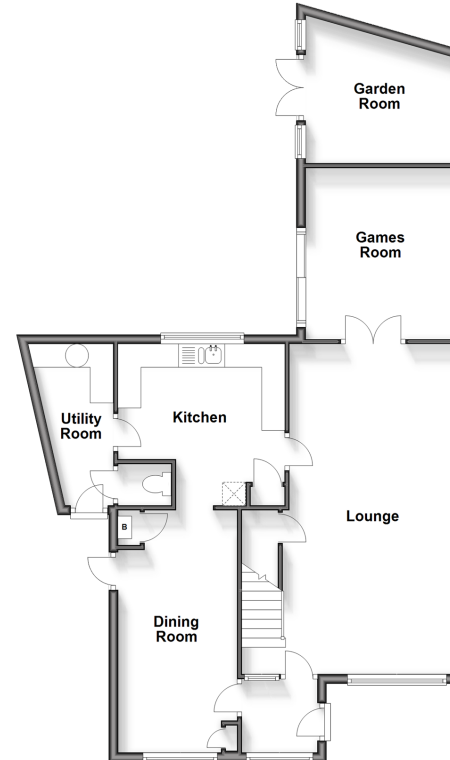
FIRST FLOOR

Landing
 Bedroom 1: 15'3 x 11'9 (4.65m x 3.58m)
 Bedroom 2: 12'3 x 8'5 (3.74m x 2.57m)
 Bedroom 3: 9'9 x 8'5 (2.97m x 2.57m)
 Bathroom

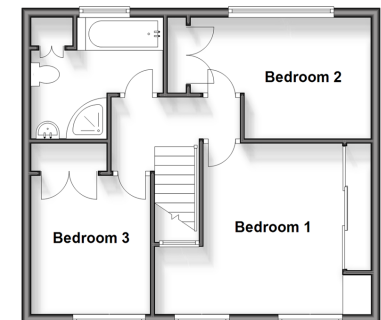
OUTSIDE

Rear Garden
 Driveway

Ground Floor
 Approx. 86.1 sq. metres (926.8 sq. feet)



First Floor
 Approx. 46.6 sq. metres (502.1 sq. feet)



Call Havant - 023 92492708 ■ cubittandwest.co.uk

■ Legal advice should be taken to verify fixtures/fittings, planning, alterations and/or lease details
 ■ Through a Homewise Home For Life Plan people aged 60+ can secure this property for up to 59% less, by purchasing a Lifetime Lease.

■ Appliances & services are untested, dimensions are approximate and floor plans are not to scale



41129448/20241203/JG/JG