



Price
£130,000

Commonhold

1x  1x  1x 

**The Limes, Regents
Court, Havant,
Hampshire, PO9**

OVER 60?

Secure this property
for up to **59% less!**

cubitt & west
Helping you move forwards



Main features

- First floor studio apartment
- Conveniently located close to Havant town centre and train station
- Low maintenance with efficient energy costs
- Modern kitchen and bathroom
- Ideal for first time buyers
- Remainder of 999 lease

Accommodation

GROUND FLOOR

Garage: 17'11 x 8'3 (5.46m x 2.52m)

FIRST FLOOR

Entrance

Living Room: 17'7 x 16'10 (5.36m x 5.13m)

Kitchen: 7'8 x 6'3 (2.34m x 1.91m)

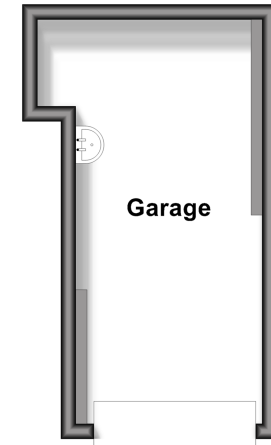
Bathroom

OUTSIDE

Communal Gardens

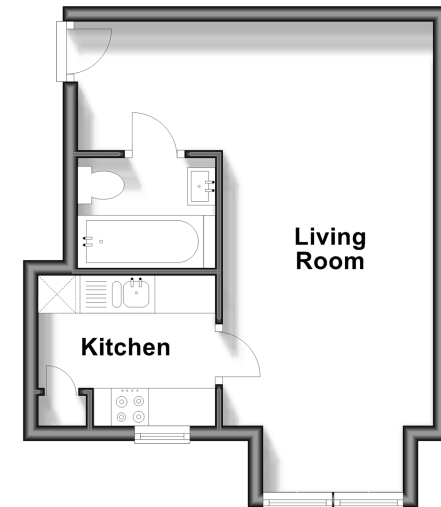
Ground Floor

Approx. 14.0 sq. metres (150.3 sq. feet)



First Floor

Approx. 28.2 sq. metres (303.6 sq. feet)



Call Havant - 023 92492708 ■ cubittandwest.co.uk

- Legal advice should be taken to verify fixtures/fittings, planning, alterations and/or lease details
- Appliances & services are untested, dimensions are approximate and floor plans are not to scale
- Through a Homewise Home For Life Plan people aged 60+ can secure this property for up to 59% less, by purchasing a Lifetime Lease.



41129429/20241202/DG1/LS1