



Price
£300,000

Freehold

3x  1x  1x 

**Martin Road, Havant,
Hampshire, PO9**

OVER 60?

Secure this property
for up to **59% less!**

cubitt&west
Helping you move forwards



Main features

- Lovely family home with plenty of storage throughout
- Off road parking for multiple cars
- Low maintenance rear garden
- Close to transport links and local amenities
- Staunton Country Park nearby for great walks

Accommodation

GROUND FLOOR

Hallway

Cloakroom

Lounge: (L-shaped) 16'5 x 9'6 (5.01m x 2.90m) plus 14'2 x 10'3 (4.32m x 3.13m)

Kitchen/Diner: 17'8 x 9'1 (5.39m x 2.77m)

FIRST FLOOR

Landing

Bedroom 1: 11'2 x 11'0 (3.41m x 3.36m)

Bedroom 2: 11'6 x 8'9 (3.51m x 2.67m)

Bedroom 3: 8'3 x 7'3 (2.52m x 2.21m)

Bathroom

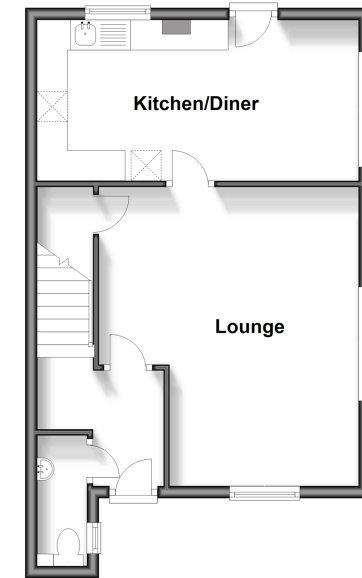
OUTSIDE

Front and Rear Garden

Off Road Parking

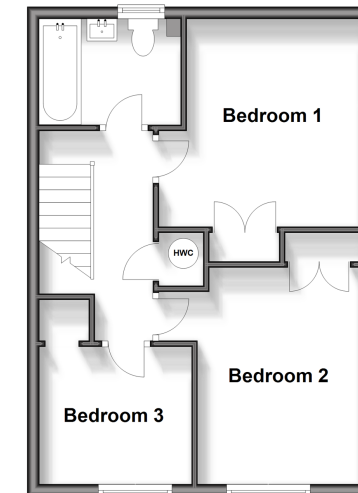
Ground Floor

Approx. 42.4 sq. metres (456.4 sq. feet)



First Floor

Approx. 41.3 sq. metres (444.6 sq. feet)



Call Havant - 023 92492708 ■ cubittandwest.co.uk

- Legal advice should be taken to verify fixtures/fittings, planning, alterations and/or lease details
- Appliances & services are untested, dimensions are approximate and floor plans are not to scale
- Through a Homewise Home For Life Plan people aged 60+ can secure this property for up to 59% less, by purchasing a Lifetime Lease.



41128952/20241017/JG/JG