



Price
£400,000

Leasehold

4x  2x  1x 

**Pipits Close, Havant,
Hampshire, PO9**

OVER 60?

Secure this property
for up to **59% less!**

cubitt & west
Helping you move forwards



Main features

- Wonderful position at the end of a quiet cul-de-sac
- Impressive kitchen/diner overlooking the immaculate rear garden
- Hot tub included
- Neutral tones throughout this beautiful home
- Large garage and off road parking for 2 vehicles
- Chain Free

Accommodation

GROUND FLOOR

Hallway
 Cloakroom
 Lounge: 17'6 x 11'2 (5.34m x 3.41m)
 Kitchen/Diner: 26'6 x 19'10 (8.08m x 6.05m)

FIRST FLOOR

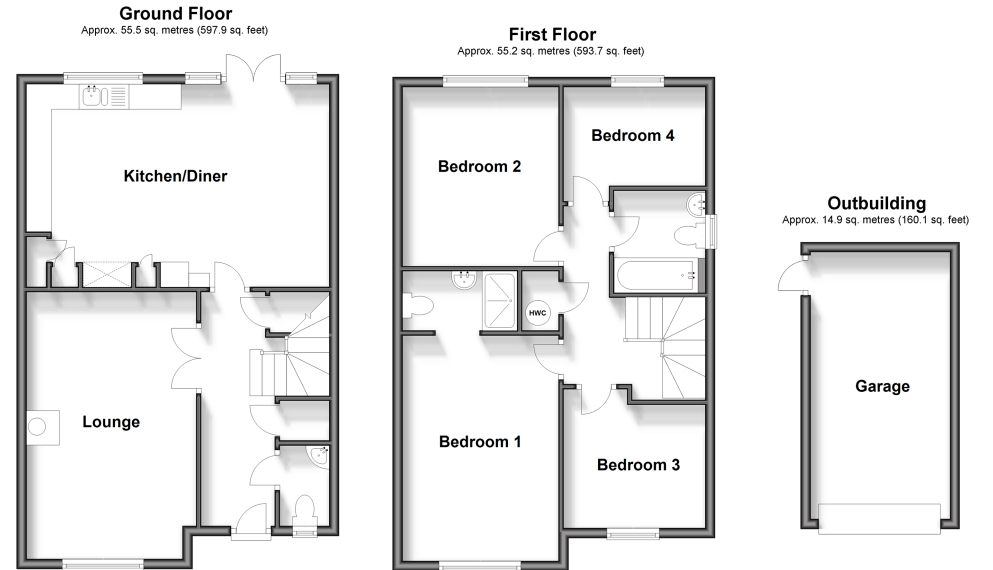
Landing
 Bedroom 1: 15'0 x 9'10 (4.58m x 3.00m)
 En-Suite Shower Room
 Bedroom 2: 11'9 x 9'10 (3.58m x 3.00m)
 Bedroom 3: 9'7 x 9'5 (2.92m x 2.87m)
 Bedroom 4: 9'8 x 6'5 (2.95m x 1.96m)
 Bathroom

OUTBUILDING

Garage

OUTSIDE

Front and Rear Garden
 Garage and Off Road Parking



Call Havant - 023 92492708 ■ cubittandwest.co.uk

■ Legal advice should be taken to verify fixtures/fittings, planning, alterations and/or lease details
 ■ Through a Homewise Home For Life Plan people aged 60+ can secure this property for up to 59% less, by purchasing a Lifetime Lease.

■ Appliances & services are untested, dimensions are approximate and floor plans are not to scale



41127211/20240925/LS1/LS1