



**Guide Price**  
**£325,000**

**Freehold**

3x  2x  1x 

**Longcroft Way, Havant,  
Hampshire, PO9**

**OVER 60?**

Secure this property  
for up to **59% less!**

**cubitt&west**  
Helping you move forwards



## Main features

- Well presented home in a popular area of Bedhampton
- Located on a private road with a driveway
- Modern neutral decor throughout this lovely property
- Low maintenance rear garden
- Close to travel links and amenities

## Accommodation

### GROUND FLOOR

Hallway  
Lounge: 16'5 x 10'4 (5.01m x 3.15m)  
Kitchen: 16'6 x 9'4 (5.03m x 2.85m)  
Cloakroom

### FIRST FLOOR

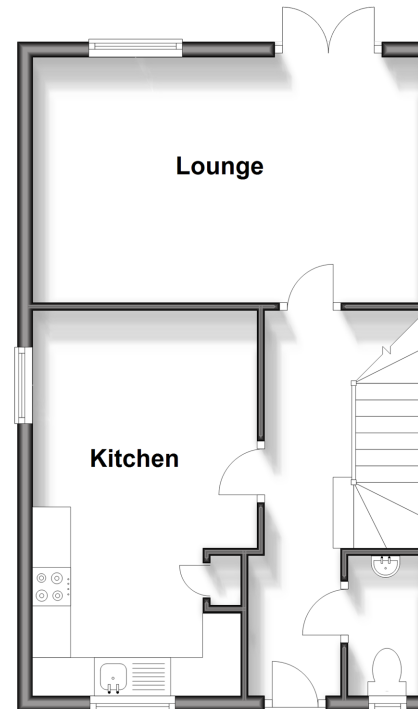
Landing  
Bedroom 1: 12'6 x 6'6 (3.81m x 1.98m)  
En-Suite Shower Room  
Bedroom 2: 10'2 x 9'6 (3.10m x 2.90m)  
Bedroom 3: 10'7 x 6'7 (3.23m x 2.01m)  
Bathroom

### OUTSIDE

Driveway  
Rear Garden

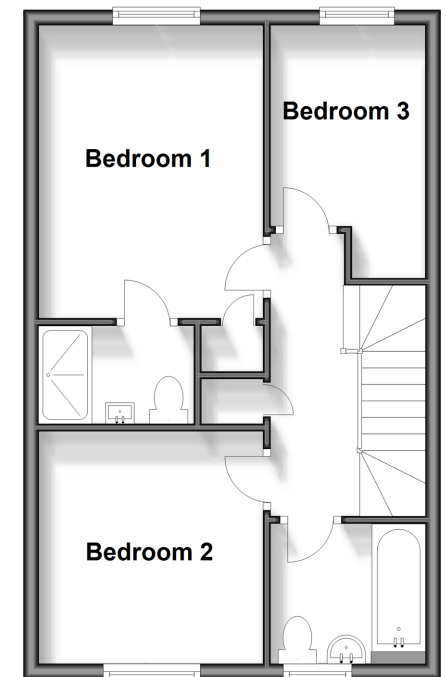
### Ground Floor

Approx. 42.2 sq. metres (454.2 sq. feet)



### First Floor

Approx. 42.2 sq. metres (454.2 sq. feet)



**Call Havant - 023 92492708 ■ cubittandwest.co.uk**

■ Legal advice should be taken to verify fixtures/fittings, planning, alterations and/or lease details  
■ Through a Homewise Home For Life Plan people aged 60+ can secure this property for up to 59% less, by purchasing a Lifetime Lease.

■ Appliances & services are untested, dimensions are approximate and floor plans are not to scale



41129118/20241023/DG1/EC