



OVER 60?

You could get up to
59% off the price!*

Price

£275,000

Freehold

3x  1x  1x 

**Spinner Drive, Havant,
Hampshire, PO9**

cubitt&west
Helping you move forwards



Main features

- Generously sized family home in sought after area
- Off road parking for two cars
- Downstairs cloakroom
- Stylish & modern kitchen diner
- Low maintenance rear garden

Accommodation

GROUND FLOOR

Hallway

Lounge: 17'7 x 11'2 (5.36m x 3.41m)

Kitchen/Diner: 28'11 x 22'6 (8.82m x 6.86m)

Cloakroom

FIRST FLOOR

Landing

Bedroom 1: 16'1 x 10'3 (4.91m x 3.13m)

Bedroom 2: 10'10 x 9'1 (3.30m x 2.77m)

Bedroom 3: 10'4 x 5'10 (3.15m x 1.78m)

Bathroom

OUTSIDE

Rear Garden

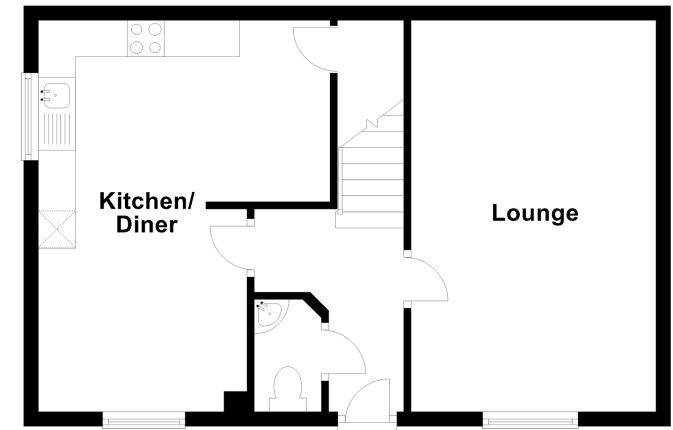
Off Road Parking

Call Havant - 023 92492708 ■ cubittandwest.co.uk

- Legal advice should be taken to verify fixtures/fittings, planning, alterations and/or lease details
- Please note that any services, heating system, or appliances have not been tested and no warranty can be given or implied as to their working order. Dimensions are approximate and floor plans are not to scale.
- Our Homewise partnership offer a 'Home for Life' plan to buyers over 60, granting a lifetime lease for your protection and reducing the purchase price by up to 59%

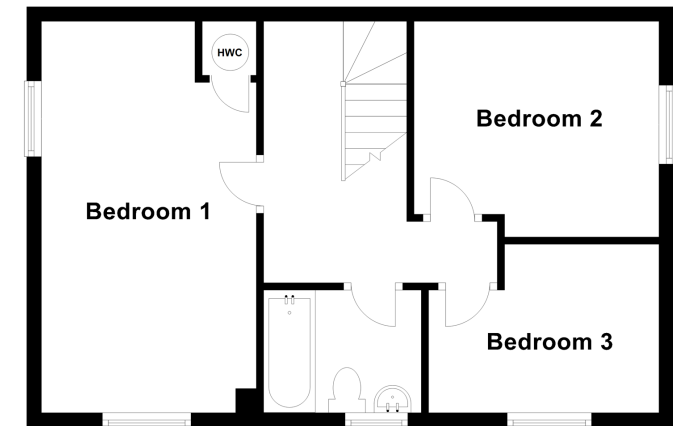
Ground Floor

Approx. 45.0 sq. metres (484.5 sq. feet)



First Floor

Approx. 45.0 sq. metres (484.5 sq. feet)



41128412/20210413/DG1/LS1