



Price

£775,000

Freehold

5x  3x  2x 

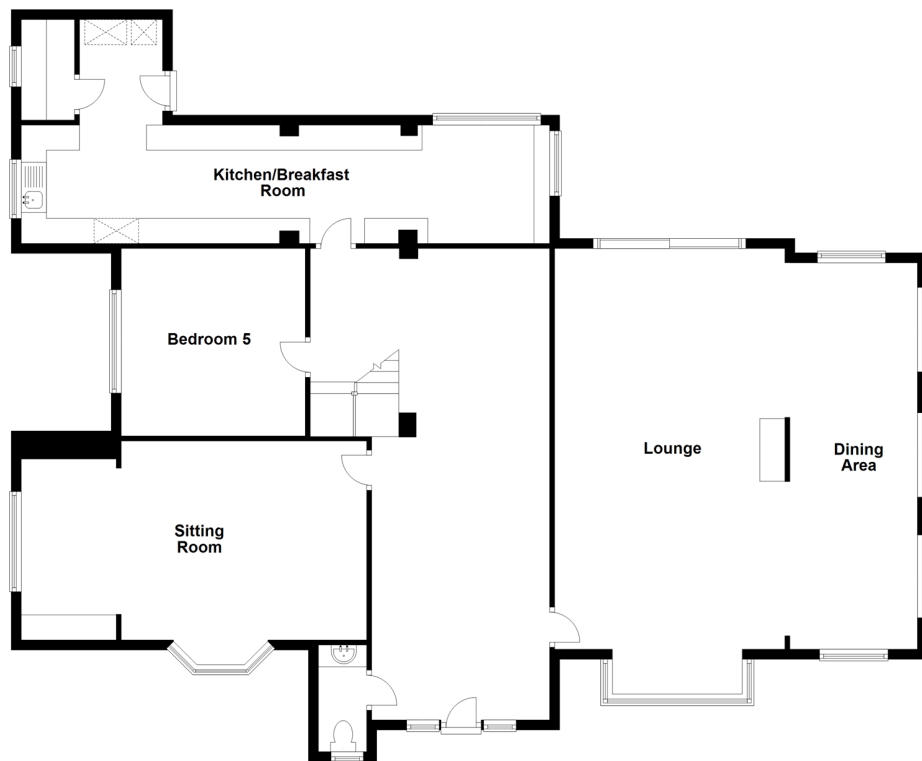
**Bacon Lane, Hayling
Island, Hampshire, PO11**

OVER 60?

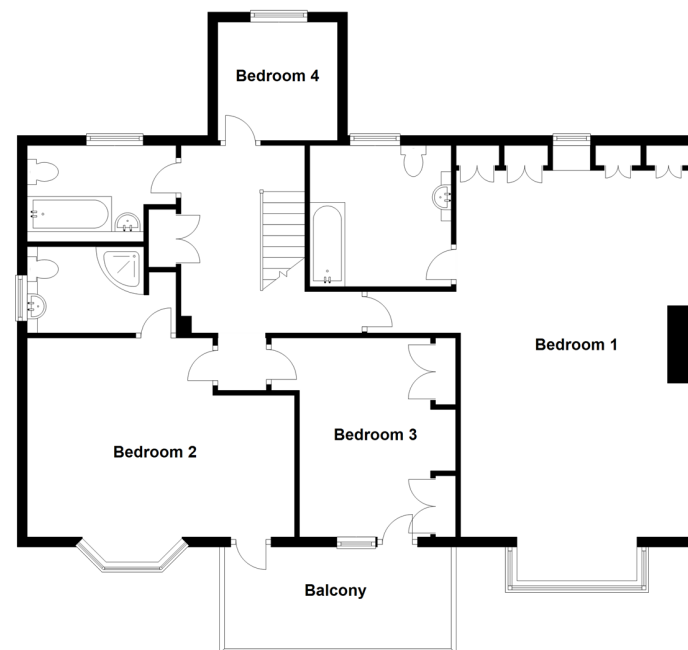
You could get up to
59% off the price!*

cubitt&west
Helping you move forwards

Ground Floor
Approx. 173.4 sq. metres (1866.3 sq. feet)



First Floor
Approx. 110.4 sq. metres (1188.8 sq. feet)



Accommodation

GROUND FLOOR

Entrance Hallway: 22'10 x 12'10 (6.96m x 3.91m)

Cloakroom

Lounge: 25'11 x 23'0 (7.90m x 7.02m)

Dining Area: 9'10 x 7'7 (3.00m x 2.31m)

Sitting Room: 12'10 x 11'10 (3.91m x 3.61m)

Bedroom 5: 9'10 x 7'7 (3.00m x 2.31m)

Kitchen/Breakfast Room: 34'4 x 7'7 (10.47m x 2.31m)

FIRST FLOOR

Landing

Bedroom 1 : 9'3 x 8'10 (2.82m x 2.69m)

En-Suite Bathroom

Bedroom 2: 17'1 x 12'10 (5.21m x 3.91m)

En-Suite Shower Room

Bedroom 3: 13'10 x 10'2 (4.22m x 3.10m)

Bedroom 4: 8'2 x 7'7 (2.49m x 2.31m)

Bathroom

OUTSIDE

Front & Rear Gardens

Off Road Parking



Main features

- Sought after Hayling Island location
- Off road parking for multiple cars
- Well matured enchanting garden
- Located close by to the beach and local shops
- Characteristic property



Nearest Schools

Primary Schools: Mengham Junior School 0.6 miles, Mill Rythe Junior School 1.2 miles, Meon Junior School 2.7 miles

Secondary Schools: The Hayling College 0.8 miles, The



Transport Information

Train Stations: Emsworth 4.9 miles, Cosham 5.0 miles, Portsmouth Harbour 5.1 miles



Address

Bacon Lane, Hayling Island, Hampshire, PO11



Directions

For directions to this property please contact us.



cubitt&west
Helping you move forwards

Call Havant Branch 023 92492708 ■ cubittandwest.co.uk



■ Legal advice should be taken to verify fixtures/fittings, planning, alterations and/or lease details ■ Appliances & services are untested, dimensions are approximate and floor plans are not to scale
■ Our Homewise partnership offer a 'Home for Life' plan to buyers over 60, granting a lifetime lease for your protection and reducing the purchase price by up to 59%



41127953/20210316/DG1/LF