



Price

£140,000

Leasehold

1x  1x  1x 

**North Street, Havant,
Hampshire, PO9**

OVER 60?

You could get up to
59% off the price!*

cubitt&west
Helping you move forwards



Main features

- Ground floor flat situated in a quiet Bedhampton location
- Great for first time buyers and investors
- Off road parking
- Ideal motorway links nearby
- Close to train lines to Portsmouth and London
- Enjoy walks around Bidbury park

Accommodation

GROUND FLOOR

Entrance Hallway

Lounge/Kitchen Area: 20'0 x 19'6 (6.10m x 5.95m)

Bedroom: 11'10 x 10'0 (3.61m x 3.05m)

Bathroom

Study: 6'7 x 3'6 (2.01m x 1.07m)

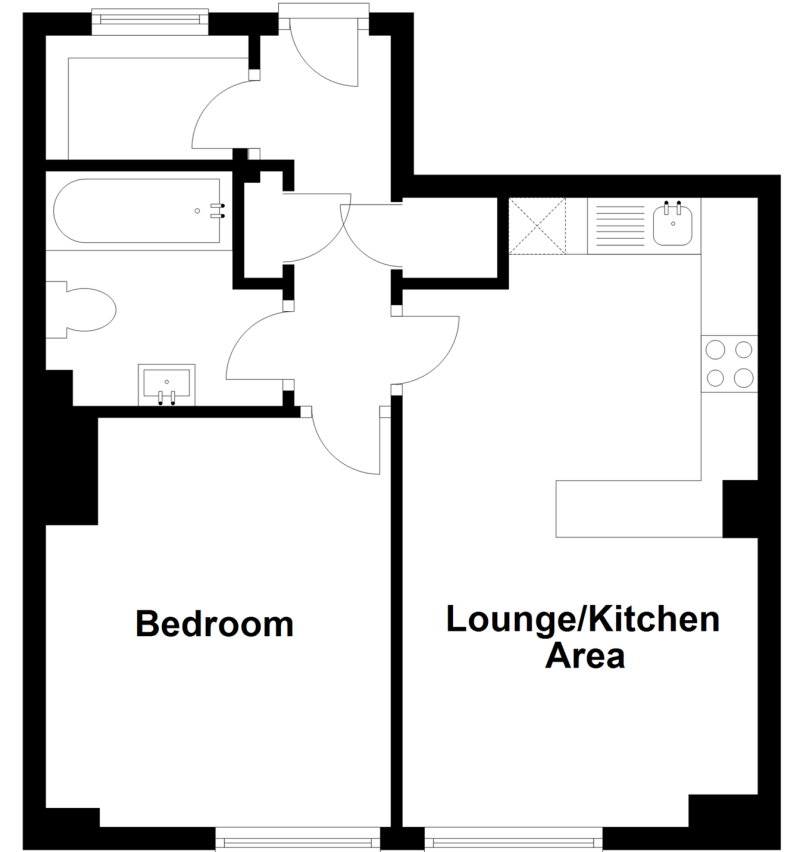
OUTSIDE

Front Garden

Off Road Parking

Ground Floor

Approx. 39.2 sq. metres (422.2 sq. feet)



Call Havant - 023 92492708 ■ cubittandwest.co.uk

- Legal advice should be taken to verify fixtures/fittings, planning, alterations and/or lease details
- Appliances & services are untested, dimensions are approximate and floor plans are not to scale
- Our Homewise partnership offer a 'Home for Life' plan to buyers over 60, granting a lifetime lease for your protection and reducing the purchase price by up to 59%



41128158/20210111/DG1/LF