



Price

£780,000

Freehold

4x  2x  3x 

Cherry Gardens,
Worthing, West Sussex,
BN13

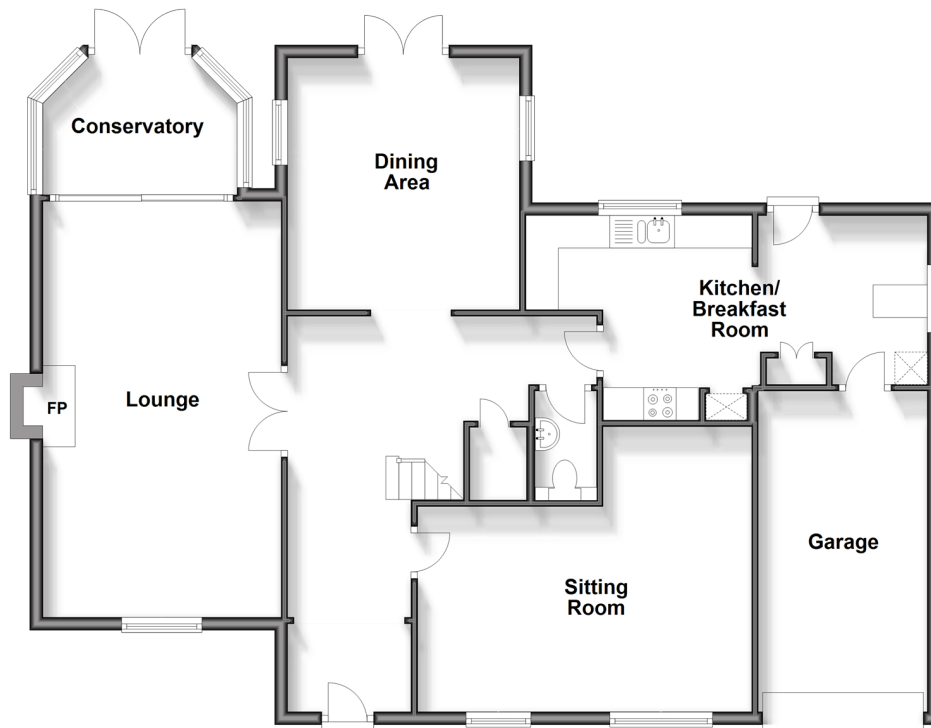
OVER 60?

Secure this property
for up to **59% less!**

cubitt & west
Helping you move forwards

Ground Floor

Approx. 114.2 sq. metres (1229.7 sq. feet)



Accommodation

GROUND FLOOR

Entrance Hall

Lounge: 20'6 x 11'9 (6.25m x 3.58m)

Conservatory : 9'6 x 6'10 (2.90m x 2.08m)

Sitting Room: 17'8 x 13'3 (5.39m x 4.04m)

Dining Area: 12'9 x 11'8 (3.89m x 3.56m)

Kitchen/Breakfast Room: 20'9 x 10'4 (6.33m x 3.15m)

Cloakroom

FIRST FLOOR

Landing

Bedroom 1: 20'7 x 11'4 (6.28m x 3.46m)

En-Suite Shower Room

Bedroom 2: 12'9 x 11'9 (3.89m x 3.58m)

Bedroom 3: 11'10 x 10'6 (3.61m x 3.20m)

Bedroom 4: 11'10 x 9'9 (3.61m x 2.97m)

Bathroom

OUTSIDE

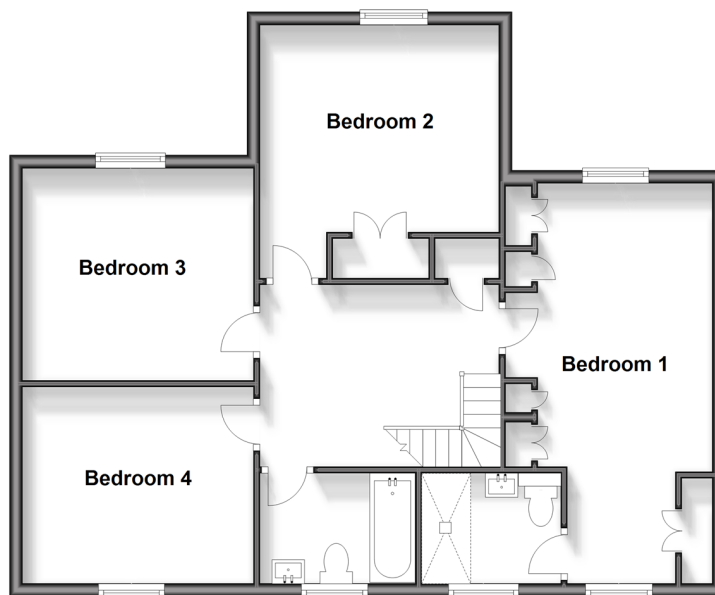
Front Garden

Enclosed Rear Garden

Private Driveway To Garage

First Floor

Approx. 75.4 sq. metres (812.1 sq. feet)





Main features

- Beautiful modern style home in a sought after location
- Light and spacious throughout
- Stunning views over Worthing to the sea
- Situated In The South Downs National Park
- School catchment area for the Vale Primary school



Nearest Schools

Primary Schools: Vale First and Middle School, Worthing 0.4 miles, Durrington Middle School 0.7 miles, English Martyrs Catholic Primary, Worthing 1.3 miles.

Transport Information

Train Stations: Durrington-on-Sea 1.9 miles, West Worthing 2.0 miles, Goring-by-Sea 2.1 miles

Address

Cherry Gardens, Worthing, West Sussex, BN13



Directions

For directions to this property please contact us.





cubitt&west
Helping you move forwards

Call Worthing Branch 01903 700657 ■ [cubittandwest.co.uk](https://www.cubittandwest.co.uk)



- Legal advice should be taken to verify fixtures/fittings, planning, alterations and/or lease details
- Appliances & services are untested, dimensions are approximate and floor plans are not to scale
- Through a Homewise Home For Life Plan people aged 60+ can secure this property for up to 59% less, by purchasing a Lifetime Lease.

EPC RATING  CURRENT:  POTENTIAL: 

40807208/20240503/SRF/JS