



OVER 60?

Secure this property
for up to **59% less!**

Price

£900,000

Freehold

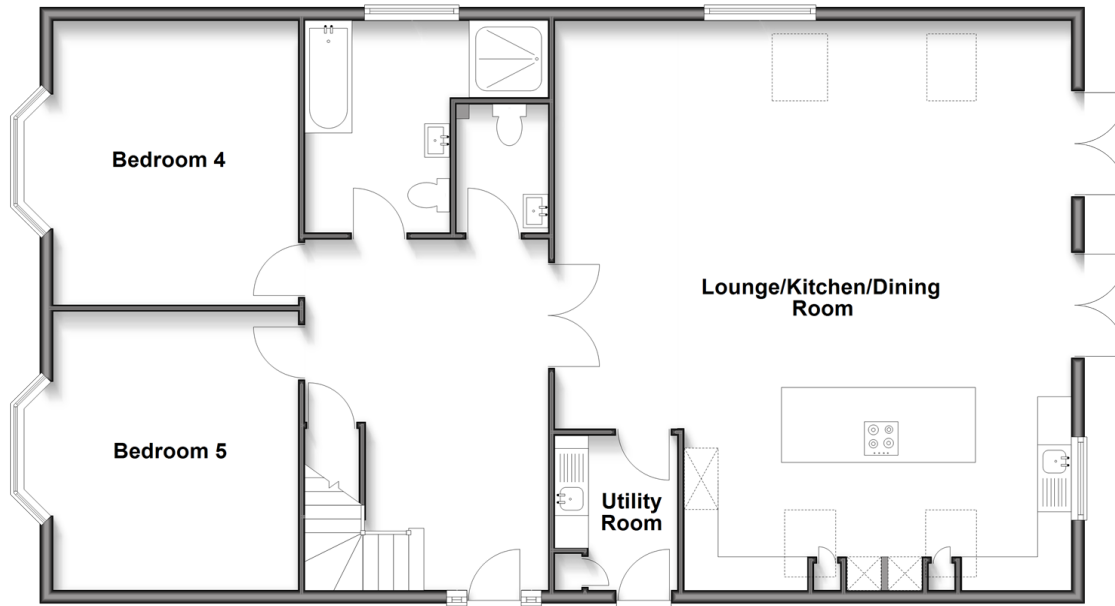
5x  3x  1x 

**The Ridgway,
Woodingdean, Brighton,
East Sussex, BN2**

cubitt&west
Helping you move forwards

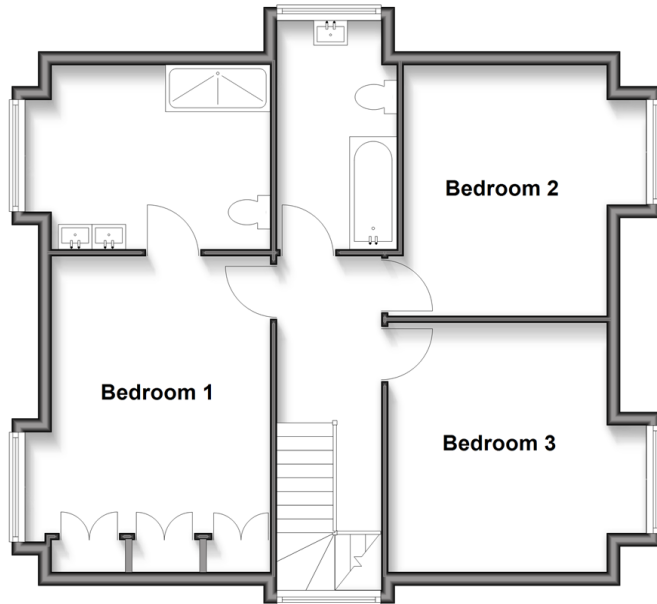
Ground Floor

Approx. 128.7 sq. metres (1385.6 sq. feet)



First Floor

Approx. 67.1 sq. metres (722.2 sq. feet)



Accommodation

GROUND FLOOR

Hallway: 17'2 x 11'9 (5.24m x 3.58m)

Lounge/Kitchen/Dining Room : 27'4 x 25'4 (8.34m x 7.73m)

Utility Room : 7'8 x 6'0 (2.34m x 1.83m)

Bedroom 4: 13'10 x 13'5 (4.22m x 4.09m)

Bedroom 5: 13'11 x 13'6 (4.24m x 4.12m)

Bath/Shower Room

Cloakroom

FIRST FLOOR

Landing

Bedroom 1: 13'8 x 10'6 (4.17m x 3.20m)

En-Suite Bath/Shower Room

Bedroom 2: 12'7 x 10'11 (3.84m x 3.33m)

Bedroom 3: 12'5 x 11'11 (3.79m x 3.63m)

Bathroom

OUTSIDE

Large Block Paved Driveway

Rear Garden



Main features

- Modern family home boasting circa 2107 Sq. Ft of luxurious accommodation
- Open plan living area with under floor heating, utility room
- Flexible accommodation, principle bedroom complete with freestanding bath, walk-in shower, and double sinks
- Landscape rear garden, block paved driveway
- CCTV system (8 cameras), NO CHAIN!



Nearest Schools

Primary Schools: Woodingdean Primary 0.4 miles, Rudyard Kipling Primary 0.5 miles, Our Lady of Lourdes RC School 2.1 miles

Secondary Schools: Longhill High School 1.8 miles.



Transport Information

Train Stations: Moulsecoomb 3.1 miles, Falmer 3.1 miles, London Road 3.5 miles, Brighton 3.5 miles



Address

The Ridgway, Woodingdean, Brighton, East Sussex, BN2



Directions

For directions to this property please contact us.



cubitt&west
Helping you move forwards

Call Woodingdean Branch 01273 606121 ■ cubittandwest.co.uk



■ Legal advice should be taken to verify fixtures/fittings, planning, alterations and/or lease details ■ Appliances & services are untested, dimensions are approximate and floor plans are not to scale
■ Through a Homewise Home For Life Plan people aged 60+ can secure this property for up to 59% less, by purchasing a Lifetime Lease.



32508090/20250508/DS/JON