



OVER 60?

Secure this property
for up to **59% less!**

Price
£525,000

Freehold

3x  1x  1x 

**Chiltington Way,
Saltdean, East Sussex,
BN2**

cubitt&west
Helping you move forwards



Main features

- Bright & spacious bungalow with wonderful views
- Large lounge/dining area overlooking rear garden
- All bedrooms are double in size
- Garage & driveway
- No onward chain

Accommodation

LOWER GROUND FLOOR

Garage

GROUND FLOOR

Entrance Hall

Lounge: 21'10 x 10'10 (6.66m x 3.30m)

Dining Area: 16'10 x 9'11 (5.13m x 3.02m)

Kitchen: 13'9 x 8'4 (4.19m x 2.54m)

Bedroom 1: 17'9 x 12'11 (5.41m x 3.94m)

Bedroom 2: 15'2 x 9'1 (4.63m x 2.77m)

Cloakroom

Bedroom 3: 11'11 x 10'0 (3.63m x 3.05m)

Bathroom

OUTSIDE

Front Garden

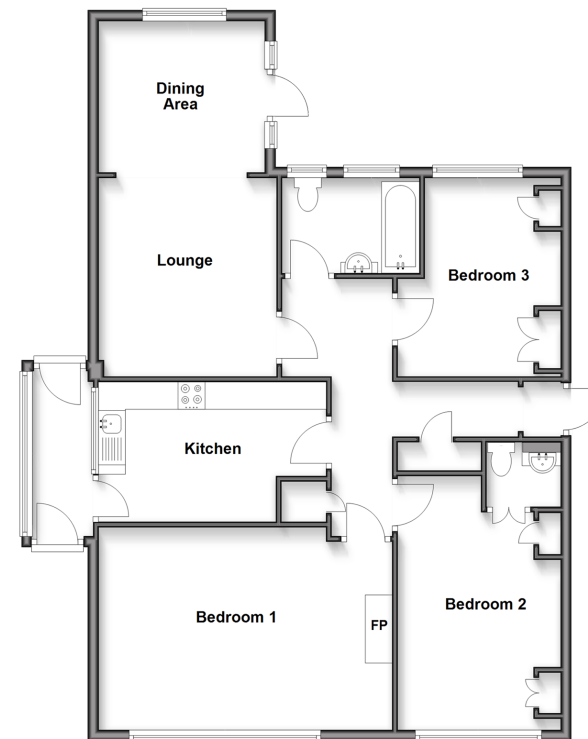
Rear Garden

Driveway

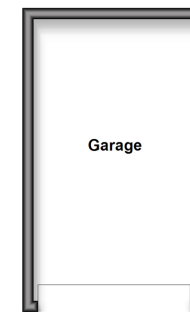
Call Woodingdean - 01273 606121 ■ cubittandwest.co.uk

- Legal advice should be taken to verify fixtures/fittings, planning, alterations and/or lease details
- Appliances & services are untested, dimensions are approximate and floor plans are not to scale
- Through a Homewise Home For Life Plan people aged 60+ can secure this property for up to 59% less, by purchasing a Lifetime Lease.

Ground Floor
Approx. 99.3 sq. metres (1069.3 sq. feet)



Lower Ground Floor
Approx. 15.7 sq. metres (168.6 sq. feet)



32005628/20250301/CA/JON