



Guide Price
£300,000

Freehold

2x  1x  1x 

**Batemans Road,
Woodingdean, Brighton,
East Sussex, BN2**

OVER 60?

Secure this property
for up to **59% less!**

cubitt&west
Helping you move forwards



Main features

- Mid terrace home full of character & charm
- Bright & spacious accommodation throughout
- Kitchen/diner
- Front & rear gardens
- Garage en-bloc

Accommodation

GROUND FLOOR

Lounge: 15'1 x 13'6 (4.60m x 4.12m)
Kitchen: 15'1 x 11'10 (4.60m x 3.61m)

FIRST FLOOR

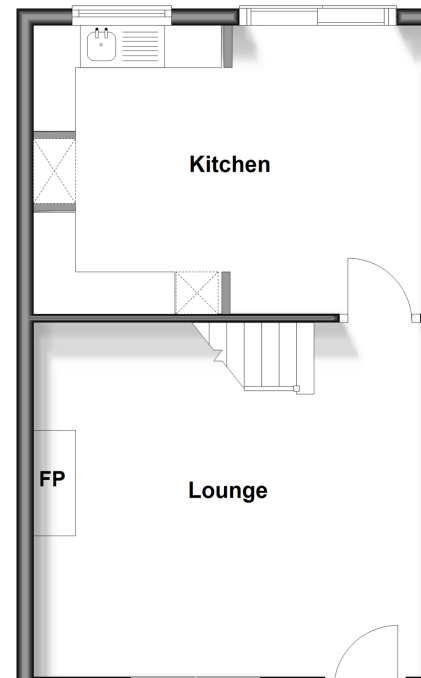
Landing
Bedroom 1: 15'2 x 10'7 (4.63m x 3.23m)
Bedroom 2: 10'11 x 8'5 (3.33m x 2.57m)
Bathroom

OUTSIDE

Front and Rear Gardens
Garage En Bloc

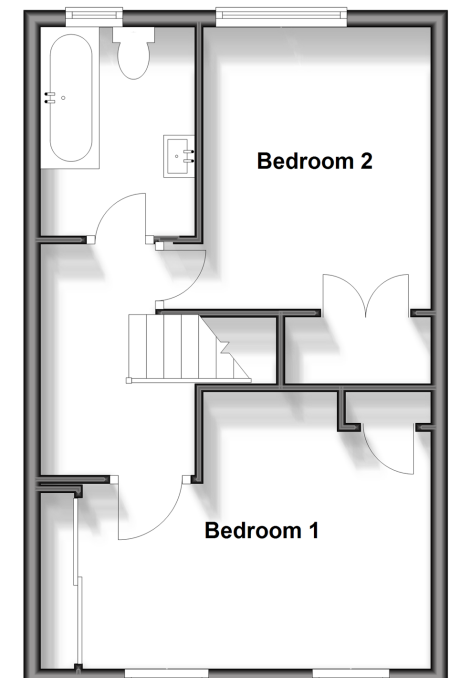
Ground Floor

Approx. 35.9 sq. metres (386.2 sq. feet)



First Floor

Approx. 35.3 sq. metres (380.5 sq. feet)



Call Woodingdean - 01273 606121 ■ cubittandwest.co.uk

■ Legal advice should be taken to verify fixtures/fittings, planning, alterations and/or lease details
■ Through a Homewise Home For Life Plan people aged 60+ can secure this property for up to 59% less, by purchasing a Lifetime Lease.

■ Appliances & services are untested, dimensions are approximate and floor plans are not to scale



32508079/20250410/JON/JON